

MODEL T2-50810 RECESSED DOCK LIFT

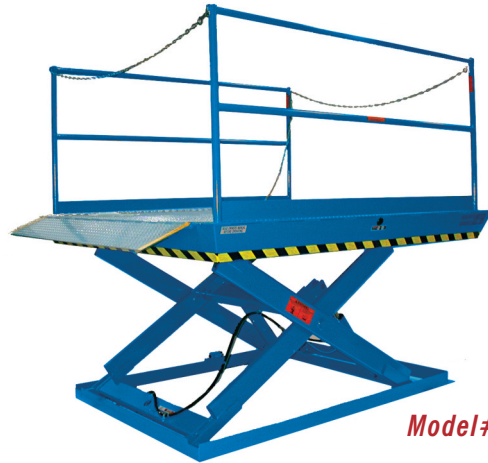
2 Year Parts & Labor/10 Year Structural Warranty

These are by far the most popular size Disappearing Dock lifts sold. They are sized to handle pallet jacks, four-wheel carts or dolly trucks. They are also used for dock to ground access.

**ISO 9001:2008
Certified**



Capacity: 5,000 lbs.
Axle Capacity Ends: 2,500 lbs.
Axle Capacity Sides: 2,500 lbs.
Platform Size: 8 x 10 ft.
Lowered Height: 8 in.
5 HP Motor
Approx. 10 FPM
58" Travel
Shipping Weight: 3,100 lbs.



Model# T2-50810

SPECIAL FEATURES & BENEFITS

- ▶ All models are equipped with a hinged bridge with a pull back chain.
- ▶ All T2 & T3 units are equipped with hot dip galvanized base frames.
- ▶ All of the electrical controllers are Underwriters Laboratories approved assemblies.
- ▶ Each unit is washed with phosphoric acid, fully primed and then finished with baked enamel.
- ▶ All cylinders are machine grade with clear plastic return lines & internal mechanical stops.
- ▶ These units conform to all applicable ANSI codes.

CLICK HERE FOR: [Drawing](#) [PDF](#) [DXF](#) [Pit Diagram](#) [Specifications](#) [Optional Accessories](#)

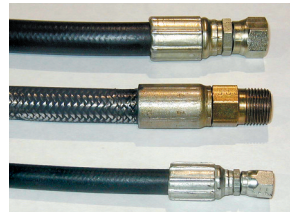
FEATURE DETAILS



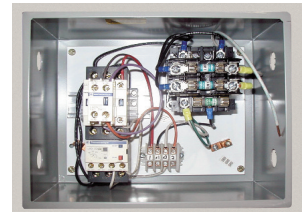
▶ **Power Unit**



▶ **Cylinder**



▶ **Double Wire
Braid Hose**



▶ **UL Listed Control
Panel**