

## MODEL T3-60708 RECESSED DOCK LIFT

**2 Year Parts & Labor/10 Year Structural Warranty**

*These are by far the most popular size Disappearing Dock lifts sold. They are sized to handle pallet jacks, four-wheel carts or dolly trucks. They are also used for dock to ground access.*

**ISO 9001:2008  
Certified**



Capacity: 6,000 lbs.  
Axle Capacity Ends: 4,000 lbs.  
Axle Capacity Sides: 2,900 lbs.  
Platform Size: 7 x 8 ft.  
Lowered Height: 8 in.  
5 HP Motor  
Approx. 10 FPM  
58" Travel  
Shipping Weight: 2,805 lbs.



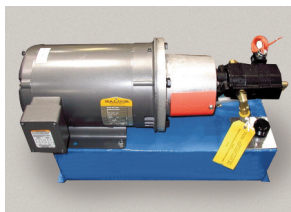
**Model# T3-60708**

### SPECIAL FEATURES & BENEFITS

- ▶ All models are equipped with a hinged bridge with a pull back chain.
- ▶ All T2 & T3 units are equipped with hot dip galvanized base frames.
- ▶ All of the electrical controllers are Underwriters Laboratories approved assemblies.
- ▶ Each unit is washed with phosphoric acid, fully primed and then finished with baked enamel.
- ▶ All cylinders are machine grade with clear plastic return lines & internal mechanical stops.
- ▶ These units conform to all applicable ANSI codes.

**CLICK HERE FOR:** [Drawing](#) PDF DXF [Pit Diagram](#) [Specifications](#) [Optional Accessories](#)

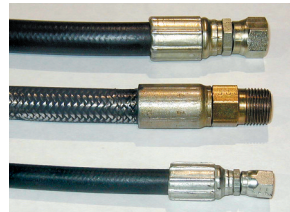
### FEATURE DETAILS



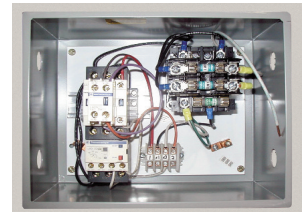
▶ **Power Unit**



▶ **Cylinder**



▶ **Double Wire  
Braid Hose**



▶ **UL Listed Control  
Panel**