



AP Series

Dock Leveler

Owner's/User's Manual



POWERAMP® • Division of Systems, Inc. • W194 N11481 McCormick Drive • Germantown, WI 53022
800.643.5424 • fax: 262.255.5917 • www.docksystemsinc.com • techservices@docksystemsinc.com

Table of Contents

	Page
Safety	
Recognize Safety Information.....	1
General Operational Safety Precautions	1
Operational Safety Precautions	2
Maintenance Safety Precautions	4
Safety Decal's	5
Owner's User's Responsibilities.....	6-7
Introduction	
General Information	7
Dock Leveler Stock Specifications.....	7
Component Identification	8
Theory.....	8
Installation	
Prepare Pit	9
Prepare Dock Leveler	10
Install Dock Leveler.....	11
Install Control Panel and Wiring	16
Put New Leveler Into Service	17
Operation	
Operating Instructions.....	18
Ramp Loading/Unloading Instructions	19
End Loading/Unloading Instructions.....	20
Maintenance	
Service Dock Leveler Safely.....	21
Periodic Maintenance	22
Adjustments	
Adjust Lip Latch and Lip Actuator Springs.....	24
Adjust Lip Stop.....	26
Snubber Chain Assembly	27
Troubleshooting	
Troubleshooting	28
Parts	
Electrical.....	30
Control Box	31
Lip Activation.....	32-33
Airbag and Support Pallet.....	35
Frame and Platform	36
Below Dock Control	38
Weather Seal,	39
Motor and Blower Assembly	40
Miscellaneous	
Customer Information	41
Warranty.....	Back Cover

Recognize Safety Information

Safety - Alert Symbol



The Safety-Alert Symbol This is the safety alert symbol. It is used to alert you to the potential physical injury hazard. Obey all safety messages that follow this symbol to avoid possible death or injury.

DANGER

The use of the word DANGER signifies the presence of an extreme hazard or unsafe practice which will most likely result in death or severe injury.

WARNING

The use of the word WARNING signifies the presence of a serious hazard or unsafe practice which could result in death or serious injury.

CAUTION

The use of the word CAUTION signifies possible hazard or unsafe practice which could result in minor or moderate injury.

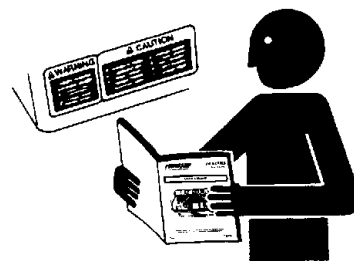
NOTICE

The use of the word NOTICE indicates information considered important, but not hazard-related, to prevent machine or property damage.

SAFETY INSTRUCTIONS

Indicates a type of safety sign, or separate panel on a safety sign, where safety-related instructions or procedures as described.

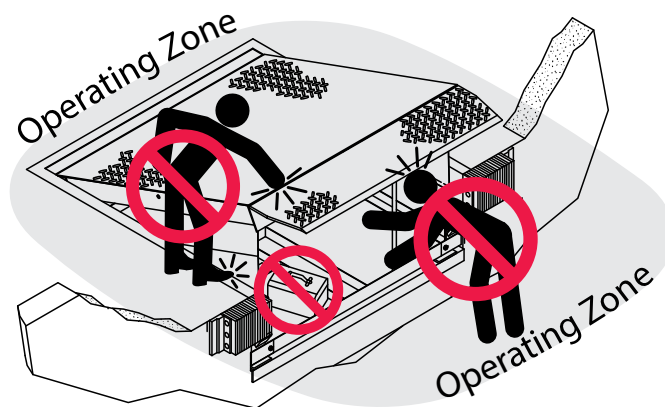
General Operational Safety Precautions



Read and understand the Owner's/User's manual and become thoroughly familiar with the equipment and its controls before operating the dock leveler.

Never operate a dock leveler while a safety device or guard is removed or disconnected.

Never remove DANGER, WARNING, or CAUTION signs or decal's on the equipment unless replacing them.



Do not start the equipment until all unauthorized personnel in the area have been warned and have moved outside the operating zone.

Remove any tools or foreign objects from the operating zone before starting.

Keep the operating zone free of obstacles that could cause a person to trip or fall.

SAFETY

Operational Safety Precautions



Learn the safe way to operate this equipment. Read and understand the manufacturer's instructions. If you have any questions, ask your supervisor.

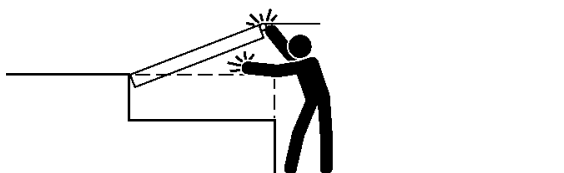
DANGER



Stay clear of dock leveling device when transport vehicle is entering or leaving area.



Do not move or use the dock leveling device if anyone is under or in front of it.



Keep hands and feet clear of pinch points. Avoid putting any part of your body near moving parts.

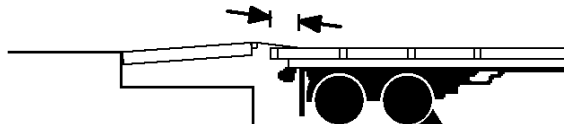
WARNING



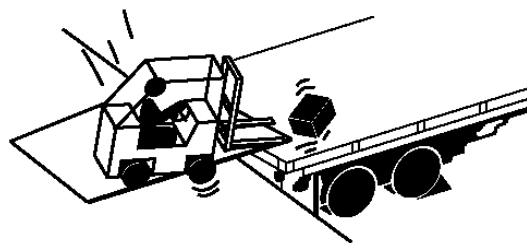
Chock/restrain all transport vehicles. Never remove the wheel chocks until loading or unloading is finished and transport driver has been given permission to drive away.



Do not use a broken or damage dock leveling device. Make sure proper service and maintenance procedures have been performed before using.

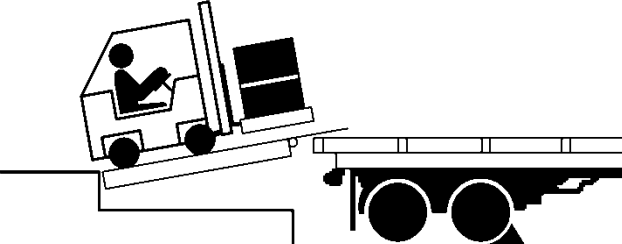


Make sure lip overlaps onto transport vehicle bed at least 4 in. (102 mm).

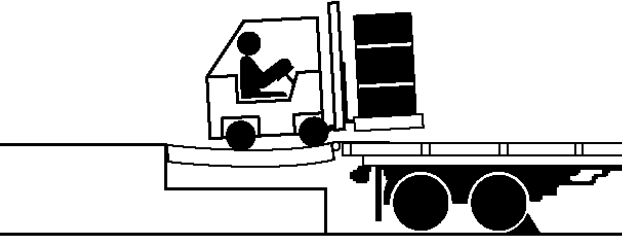


Keep a safe distance from both side edges.

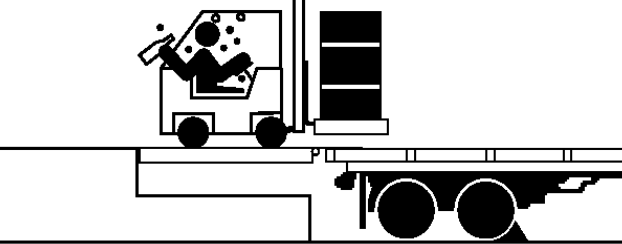
! WARNING



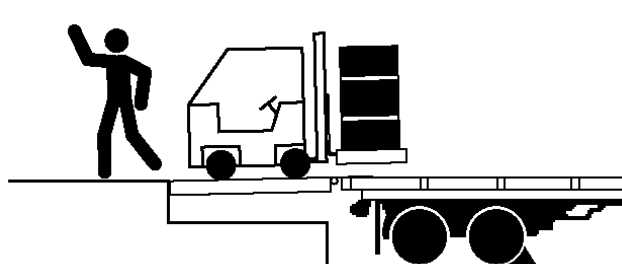
Do not use dock leveling device if transport vehicle is too high or too low.



Do not overload the dock leveling device.



Do not operate any equipment while under the influence of alcohol or drugs.

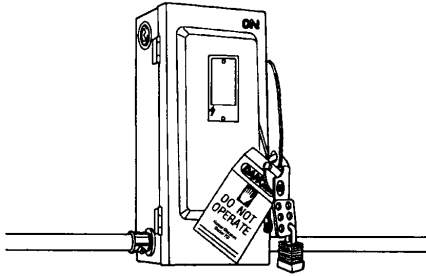


Do not leave equipment or material unattended on dock leveling device.

SAFETY

Maintenance Safety Precautions

DANGER



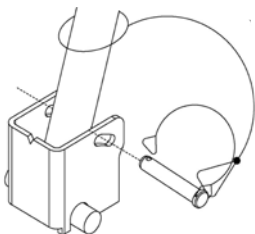
Hydraulic and electrical power must be OFF when servicing the equipment. For maximum protection, use an OSHA approved locking device to lock out all power sources. Only the person servicing the equipment should have the key to unlock the device.

WARNING



Always post safety warnings and barricade the work area at dock level and ground level to prevent unauthorized use of the unit before maintenance is complete.

DANGER



A maintenance prop permanently attached and hinged to the unit with means for lock out/tag out requirements (per OSHA 1910.147) is included with each pit style dock leveler. In addition, it is recommended and good safety practice to use an additional means to support the dock platform and lip anytime when physically working in front of or under the dock leveler. This additional means may include, but not limited to a boom truck, fork truck, stabilizing bar or equivalent.

WARNING

ALWAYS disconnect electrical power source and ground wire before welding on dock leveler.

DO NOT ground welding equipment to any hydraulic or electrical components of the dock leveler. Always ground to the dock leveler frame.

WARNING

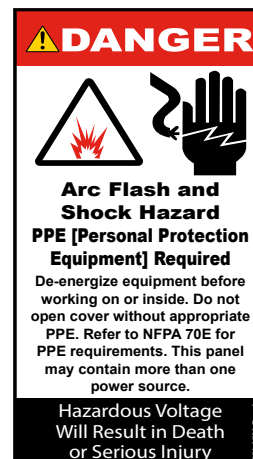
DO NOT grind or weld if hydraulic fluid or other flammable liquid is present on the surface to be ground or welded

DO NOT grind or weld if uncontained hydraulic fluid or other flammable liquid is present. Stray sparks can ignite spills or leaks near the work area. Always clean up the oil leaks and spills before proceeding with grinding or welding.

Always keep a fire extinguisher of the proper type nearby when grinding or welding.

WARNING

ALWAYS stand clear of dock leveler lip when working in front of the dock leveler.



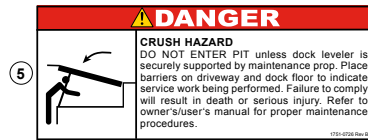
Safety Decals



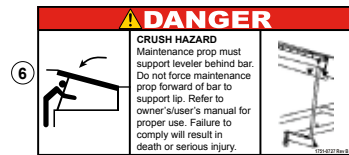
1751-0329



1751-0330 Two positions one on top of each fork pocket.



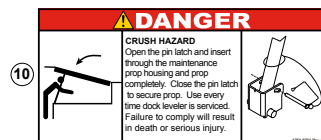
1751-0726



1751-0727



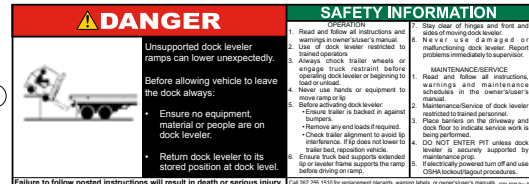
1751-0729



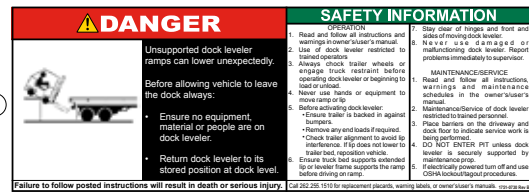
1751-0138



1751-0735



1751-0730



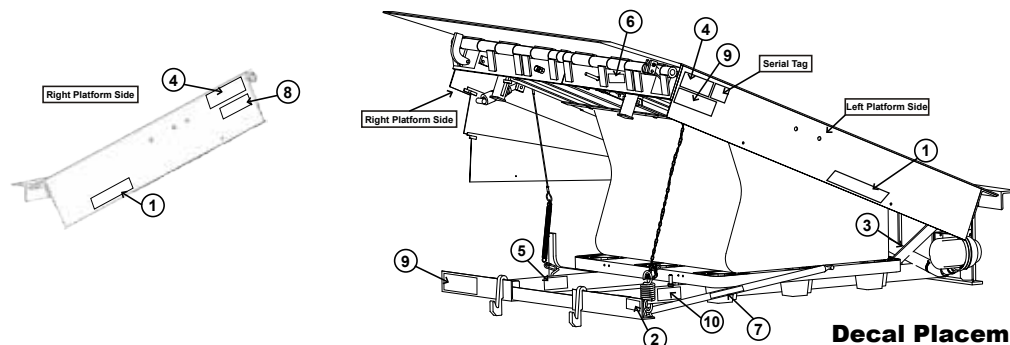
1751-0397



1751-0397



1751-0489



Decal Placement for AP Series

OWNER'S/USER'S RESPONSIBILITIES

- 1) The manufacturer shall provide to the initial purchaser and make the following information readily available to the owners/users and their agents, all necessary information regarding Safety Information, Operation, Installation and Safety Precautions, Recommended Initial and Periodic Inspections Procedures, Planned Maintenance Schedule, Product Specifications, Troubleshooting Guide, Parts Break Down, Warranty Information, and Manufacturers Contact Information, as well as tables to identify the grade(slope) for all variations of length or configuration of the dock leveling device and information identifying the maximum uncontrolled drop encountered when sudden removal of support while in the working range of the equipment.
- 2) When selecting loading dock safety equipment, it is important to consider not only present requirements but also future plans and any possible adverse conditions, environmental factors or usage. The owners/users shall provide application information to the manufacturer to receive recommendations on appropriate equipment specifications and capacity.
- 3) The Owner/User must see all nameplates, placards, decals, instructions and posted warnings are in place and legible and shall not be obscured from the view of the operator or maintenance personnel for whom such warnings are intended for. Contact manufacturer for any replacements.
- 4) Dock leveling devices may become hazardous if the manufacturer's instructions regarding modifications or adjustments are not followed. Modifications or alterations of dock leveling devices shall only be made with prior written approval from the original manufacturer. These changes shall be in conformance with all applicable provisions of the MH30.1 standard and shall also satisfy all safety recommendations of the original equipment manufacturer of the particular application.
- 5) The owner/user should recognize the inherent dangers of the interface between the loading dock and the transport vehicle. The owner/ user should, therefore, train and instruct all operators in the safe operation and use of the loading dock equipment in accordance with manufacturer's recommendations and industry standards. Effective operator training should also focus on the owner's/user's company policies, operating conditions and the manufacturer's specific instructions provided with the dock leveling device. Maintaining, updating and retraining all operators on safe working habits and operation of the equipment, regardless of previous experience, should be done on a regular basis and should include an understanding and familiarity with all functions of the equipment. Owners/users shall actively maintain, update and retrain all operators on safe working habits and operations of the equipment.
- 6) An operator training program should consist of, but not necessarily be limited to, the following:
 - a) Select the operator carefully. Consider the physical qualifications, job attitude and aptitude
 - b) Assure that the operator reads and fully understands the complete manufacturer's owners/users manual.
 - c) Emphasize the impact of proper operation upon the operator, other personnel, material being handled, and equipment. Cite all rules and why they are formulated.
 - d) Describe the basic fundamentals of the dock leveling device and components design as related to safety, e.g., mechanical limitation, stability, functionality, ect.
 - e) Introduce the equipment. Show the control locations and demonstrate its functions. Explain how they work when used properly and maintained as well as problems when they are used improperly.
 - f) Assure that the operator understands the capacity rating, nameplate data, placards and all precautionary information appearing on the dock leveling device.
 - g) Supervise operator practice of equipment.
 - h) Develop and administer written and practical performance tests. Evaluate progress during and at completion of the course.
 - i) Administer periodic refresher courses. These may be condensed versions of the primary course and include on-the-job operator evaluation.
- 7) Loading dock safety equipment should never be used outside of its vertical working range, or outside the manufacturer's rated capacity. It shall also be compatible with the loading equipment and other conditions related to dock activity. Please consult the manufacturer if you have any questions as to the use, vertical working range or capacity of the equipment. Only properly trained and authorized personnel should operate the equipment.
- 8) It is recommended that when the transportation vehicle is positioned as close as practical to the dock leveling device and in contact with both bumpers, there shall be a minimum of 4.00 inches (100mm) overlap between the front edge of the lip

and the edge of the floor or sill of the transport vehicle at all times during the loading and unloading process.

- 9) When goods are transferred between the loading dock and the transport vehicle, this vehicle shall have the brakes and wheel chocks or positive restraints that provide the equivalent protection of wheel chocks shall be engaged. It is recommended that transport vehicles with air-ride suspension systems shall have its air exhausted prior to performing loading and unloading operation to minimize transport vehicle bed drop.
- 10) Manufacturer's recommended maintenance and inspection of all dock leveling devices shall be performed in conformance with the following practices: A planned Maintenance schedule program must be followed, only trained and authorized personnel shall be permitted to maintain, repair, adjust and inspect dock leveling devices, and only the use of original equipment manufacturer parts, manuals, maintenance instructions, labels, decals and placards or their equivalent. Written documentation of maintenance, replacement parts or damage should be kept. In the event of damage, notification to the manufacturer is required.
- 11) Loading dock devices that are structurally damaged or has experienced a sudden loss of support while under load, such as might occur when a transport vehicle is pulled out from under the dock leveling device, shall be removed from service, inspected by a manufacturer's authorized representative, and repaired or replaced as needed or recommended by the manufacturer before being placed back in service.

General Information

Congratulations on your choice of a Poweramp dock leveler. This manual covers the Air Bag, AP model air powered dock leveler.

Designed by Poweramp to be a marvel of simplicity and efficiency, your dock leveler, when properly installed, will provide many years of trouble-free performance with an absolute minimum of maintenance. Its revolutionary air bag system efficiently controls and operates every function. To obtain maximum performance and longest possible use, a simple program of preventive maintenance is recommended.



The AP dock leveler comes equipped with an electrical control panel, which allows push button operation of the dock leveler functions. Each AP dock leveler unit and control panel has been factory pre wired and tested to ensure satisfactory operation.

To illustrate which connections are to be made in the field at installation, electrical drawings are included with each order or by contacting Technical Services.

Once again, thank you and congratulations on your purchase of a Poweramp AP dock leveler.

Dock Leveler Stock Specifications

AP-Series dock levelers are available in the following sizes, weight capacities, and options:

Width: AP

6 ft (1829 mm)
6-1/2 ft (1981 mm)
7 ft (2134 mm)

Length

6 ft (1828.8 mm)
8 ft (2438 mm)
10 ft (3048 mm)

Capacity (CIR*)

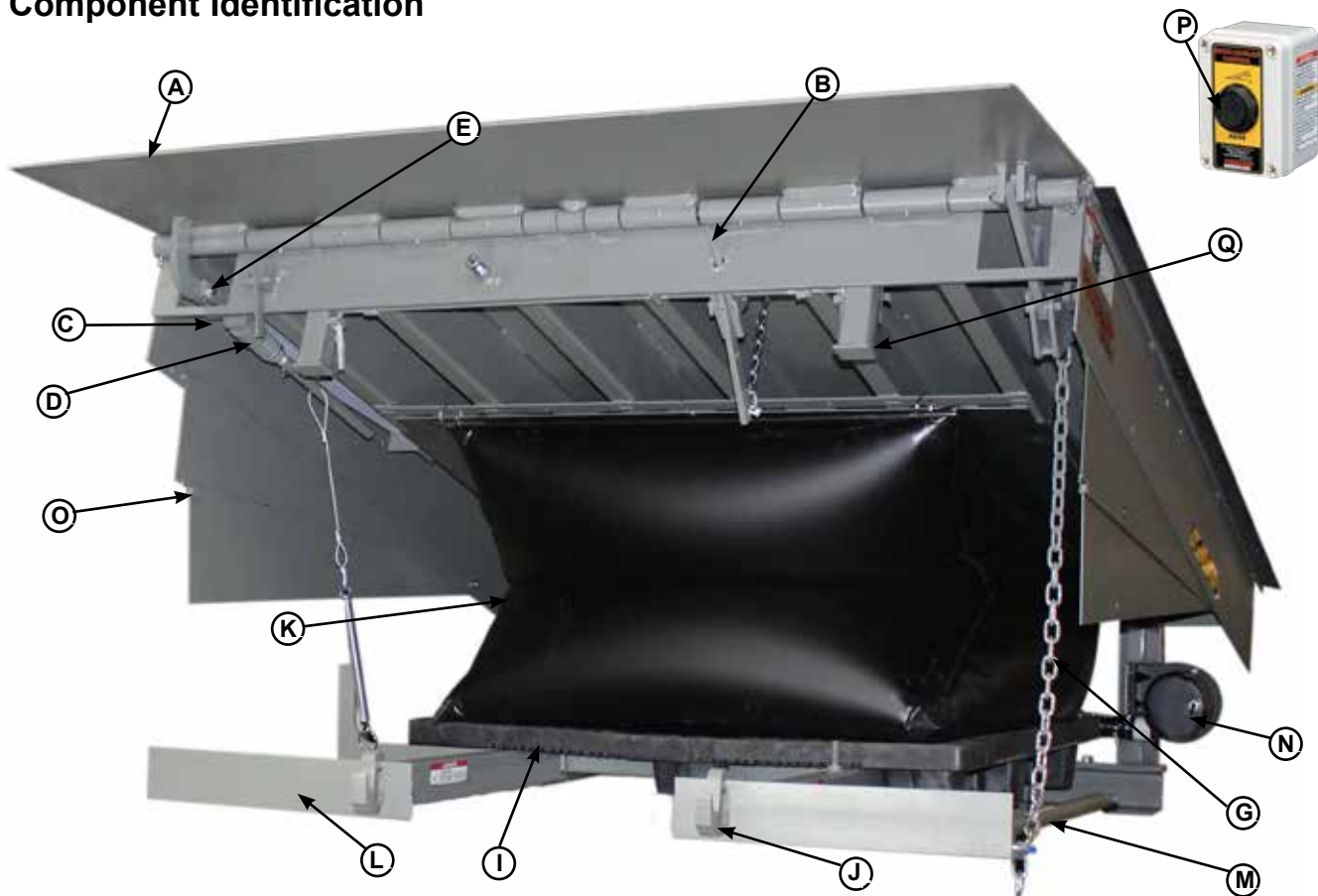
25,000 lb (11,340 kg)
30,000 lb (13,608 kg)
35,000 lb (15,876 kg)
40,000 lb (18,144 kg)
45,000 lb (20,412 kg)
50,000 lb (22,680 kg)

* CIR (Comparative Industry Rating)

All docks are available in 115V motors only.

INTRODUCTION

Component Identification



A — Lip
B — Below Dock Control
C — Lip Linkage Assembly
D — Lip Latch Assembly

E — Lip Prop
G — Lip Actuator Chain
I — Air Bag Support Pallet

J — Lip Keepers (2 used)
K — Air Bag
L — Main Frame
M — Maintenance Prop

N — Blower Motor
O — Toe Guard (2 used)
P — Raise Button
Q — Safety Legs

THEORY

The AP dock leveler uses a blower motor and one-button operation for ease of use.

The dock leveler can be operated by depressing the RAISE button (P) on the control panel. This activates an electric blower motor (N). The blower forces air into the air bag (K), causing the platform to rise. Releasing the RAISE button allows the platform to lower.

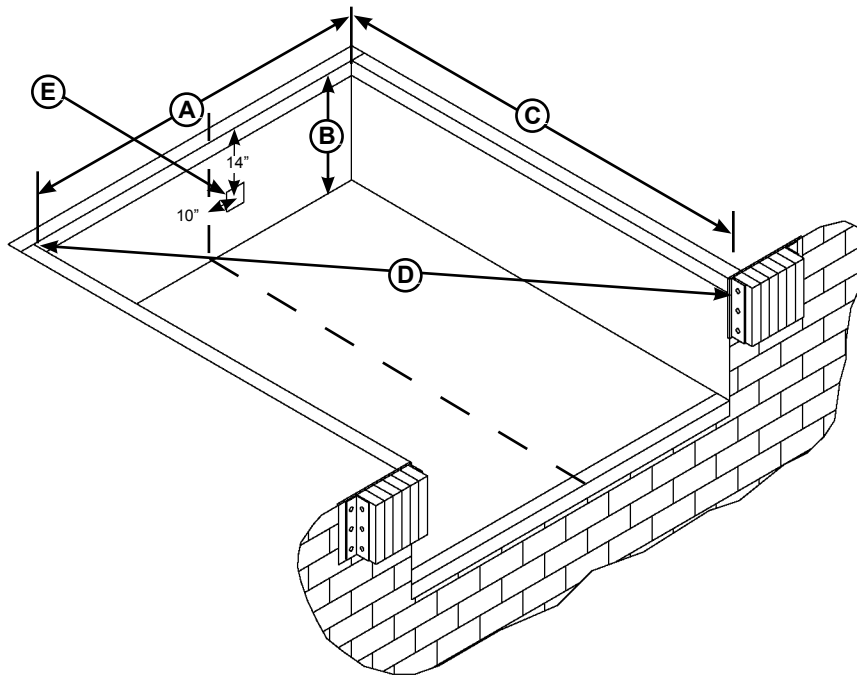
When the platform rises to the point where there is 2 — 3 in. (51 — 76 mm) from its full raised height, the lip actuator chain (G), causes the lip linkage assembly to rotate the lip out and up. The lip assist spring (not shown) also helps the lip extend. When the lip is fully extended, the lip latch cable engages the lip latch assembly (D), locking the lip in the extended position. The dock leveler has reached its full height when the lip is fully extended.

To lower the platform, release the RAISE button (P).

The platform will lower until the extended lip rests on the transport vehicle bed. If the lip did not fully extend or there is no transport vehicle at the dock the platform will lower until one of the following conditions occur:

- Lip is resting on lip keepers (cross-traffic position).
- Leveler went to the below-dock position, lip folds automatically, leveler rests on the safety legs (below dock position).
- Leveler went to the below dock position with operator holding the safety leg retract cable (not shown), safety legs are retracted, lip folds automatically causing dock to rest in the full below dock position.

Prepare Pit



A—Distance (Pit Width)
(Front and Rear)

B— Distance (Dock Floor-to-Pit
Floor) (All Four Corners)

C— Distance (Pit Length)
(Both Sides of Pit)

D— Distance (Pit Corner-to-Corner)
(Top, Bottom, and Both Sides)

WARNING

Post safety warnings and barricade the work area at dock level and ground level to prevent unauthorized use of the dock leveler before installation has been completed.

CAUTION

Only trained installation professionals with the proper equipment should install this product.

NOTICE

DO NOT remove the shipping bands around the dock leveler lip until instructed to do so.

Before lowering the dock leveler into the pit, the following must be performed:

1. Remove all debris from the pit and sweep the pit clean.
2. Check the entire dock leveler pit for proper construction according to approved/certified pit drawings. Make sure pit is square by making the following measurements:
 - Measure pit width distance (A) at both front and rear of pit.
 - Measure dock floor-to-pit floor distance (B) at all four corners.
 - Measure pit length distance (C) at sides.
 - Measure corner-to-corner (crisscross) distance (D) at both sides. Take measurements at dock floor level and at pit floor level.

If any measurement is off by more than 1/8 in. (3.18 mm), contact Technical Services before proceeding.

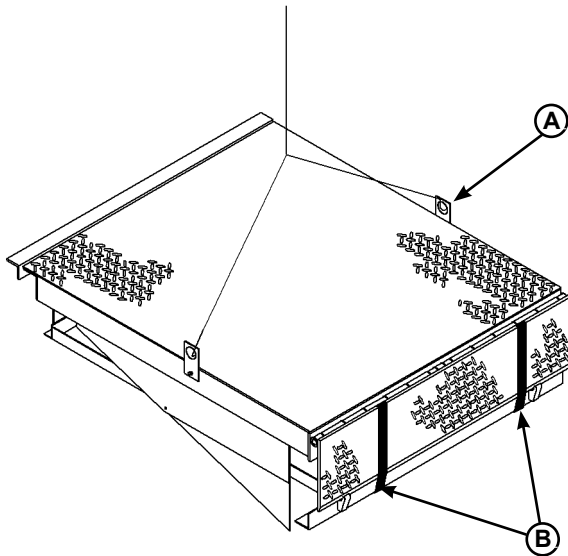
3. Make sure the field junction box for the dock leveler (E) is at the correct location per pit diagrams.

* Refer to OSHA regulation 1910.146. Confine Space

* Refer to OSHA regulation 1910.147. Lockout/Tagout

INSTALLATION

Prepare Dock Leveler



A— Lifting Bracket (2 used)

B — Shipping Bands

Poweramp dock levelers are designed with installation in mind. Each unit is shipped with lifting brackets (A) fastened to the platform side joists.

WARNING

The dock leveler is heavy. Use a lifting device and chains with the appropriate lifting capacity and reach.

Always use the lifting brackets provided with the unit whenever lowering or lifting a dock leveler into or out of a pit.



NOTICE

DO NOT remove the shipping bands (B) around the platform lip and leveler frame at this time. The shipping bands are needed to hold the leveler together during the installation process.

NOTICE

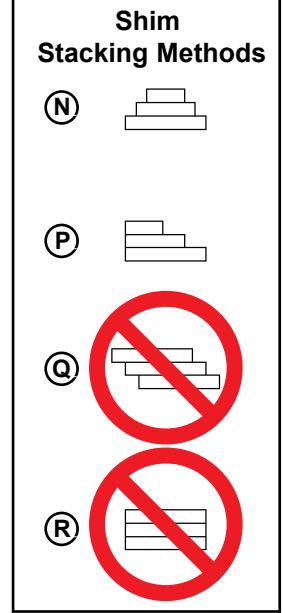
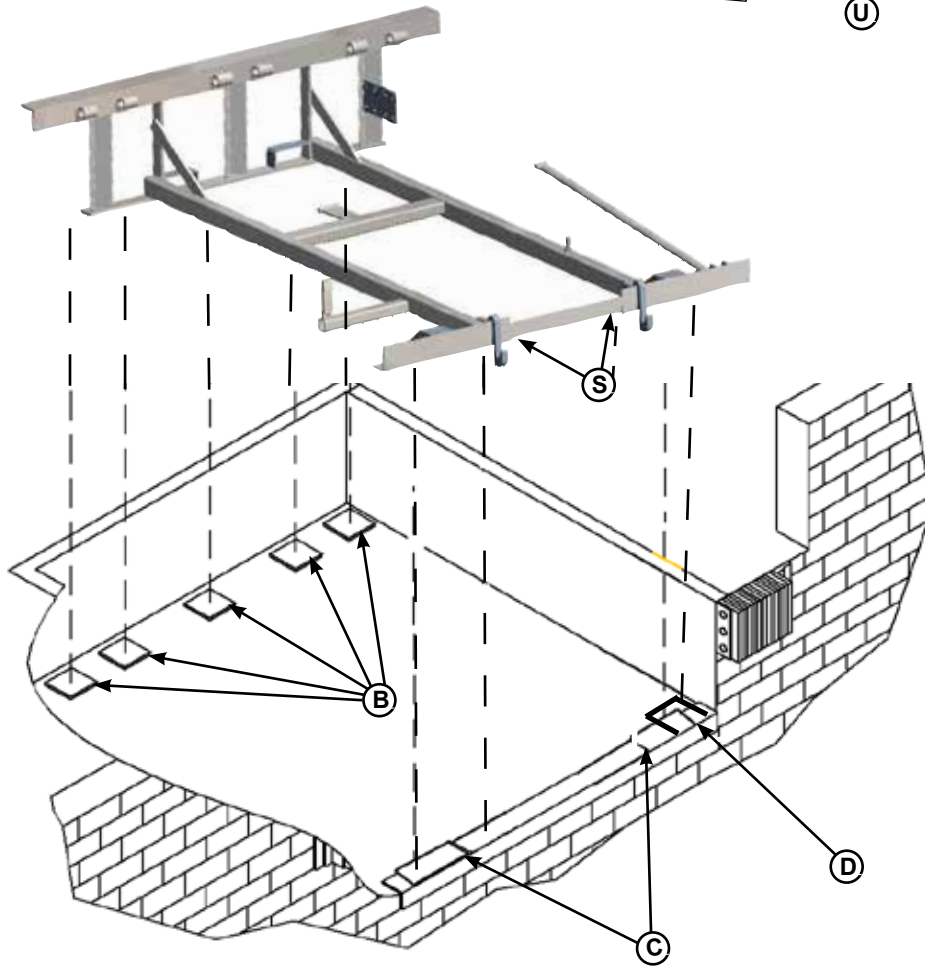
DO NOT over tighten the lifting bracket hardware. Over tightening can damage the weather seal, if equipped.

1. Remove any control panel and bumpers that may be banded to the frame of the dock leveler.
DO NOT remove the shipping bands (B) around the platform lip and leveler frame at this time.

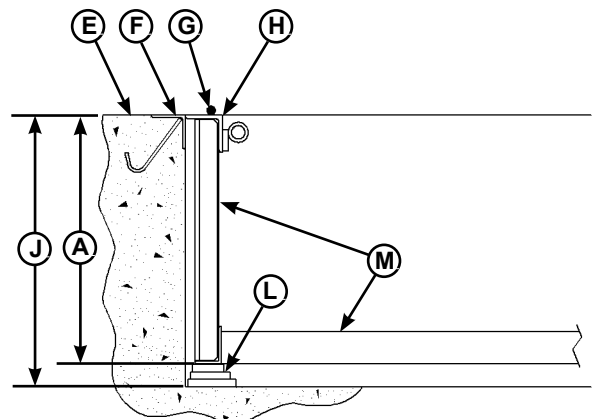
NOTE: Overall width of platform and lifting brackets (A) must be kept to a minimum to prevent interference between the lifting brackets and the pit walls as the dock leveler is lowered into the pit.

2. Make sure the mounting hardware of lifting brackets (A) is snug. The brackets should pivot relatively freely on the mounting cap screw. DO NOT over tighten.
3. Attach lifting chains to lifting brackets (A) and to a lifting device (i.e., hoist or fork truck) having the appropriate lifting capacity and reach.
4. Remove wood blocks that are attached to the leveler frame before putting the dock leveler into the pit.
5. Attach a temporary, switch, power supply to the blower before lowering leveler into pit. Keep power cables clear of frame members, shim locations and pinch points. **DO NOT CONNECT POWER AT THIS TIME.**
6. Remove 3 plastic ties that hold the bag and bag support skid to the underside of the leveler during shipping before lowering leveler into pit.

Install Dock Leveler



- A— Distance (Leveler Frame Height)
- B— Shim Locations (Under Rear Vertical Supports)
- C— Shim Location (Under Lip Keepers and Safety Legs)
- D— Shim Location (Maintenance Prop)
- E— Dock Floor
- F— Rear Pit Curb Angle
- G— String
- H— Rear Hinge Frame Angle
- J— Distance (Dock Floor-to-Pit Floor)
- K— Distance (Top of Shim Stack-to-Dock Floor)
- L— Shim Stack (see B)
- M— Dock Leveler Frame
- N— Pyramid (Preferred)
- P— Stepped (Acceptable)
- Q— Offset (Not Acceptable)
- R— Straight (Not Acceptable)
- S— Removable Frame Section
- T— Shim Location Under Snubber Spring)
- U— Lip Keeper (Shim between lip keeper and curb angle as required)



INSTALLATION

NOTE: Poweramp dock levelers are designed with a nominal 1/2 in. (12.7 mm) shimming distance to allow for pit inconsistencies.

1. Determine height of shim stack (L) for each shim location (B) by performing the following:
 - a. Measure leveler frame height distance (A) (p.11).
 - b. Measure dock floor-to-pit floor distance (J) at each shim location (B). Write down the dimensions obtained at each location.
 - c. Subtract distance (A) from distance (J) to obtain the shim height. Repeat for each shim location.

NOTICE

The minimum size of the shim that contacts the leveler frame (i.e., the top shim of each shim stack) must be at least 4-1/2 x 4-1/2 in. (114.3 x 114.3 mm) to support the full width of the hoist cylinder / storage prop weldment.

Use the thickest shim stock possible for stability and weld penetration purposes. DO NOT use multiple layers of 1/8 in. (3.18 mm) or thinner shim stock.

2. Using the results obtained in step 1, create the individual shim stacks on the pit floor at locations (B). Build each shim stack (L) using the pyramid method (N) (preferred) or stepped method (P) with the top shim having a minimum size of 4-1/2 x 4-1/2 in. (114.3 x 114.3 mm) and each successive lower shim being larger so the shims can be welded together using a fillet weld. DO NOT use offset method (Q) or straight method (R).

NOTE: To assist in obtaining an accurate measurement of distance (A), use a string (G) pulled tight across the pit opening, directly over the shim locations.

3. Verify that each shim stack is at the correct height by measuring distance (A) [top of shim stack (L) to dock floor]. Distance (A) must equal the dock leveler height (A).
4. For all AP models, put a 1/4 in. (6.6 mm) thick shim at locations (C&D).

NOTE: A 1/4 in. (6.6 mm) thick shim at locations (C&D) is used only as a starting point. The final shim stack height will be determined after dock leveler is lowered into the pit.

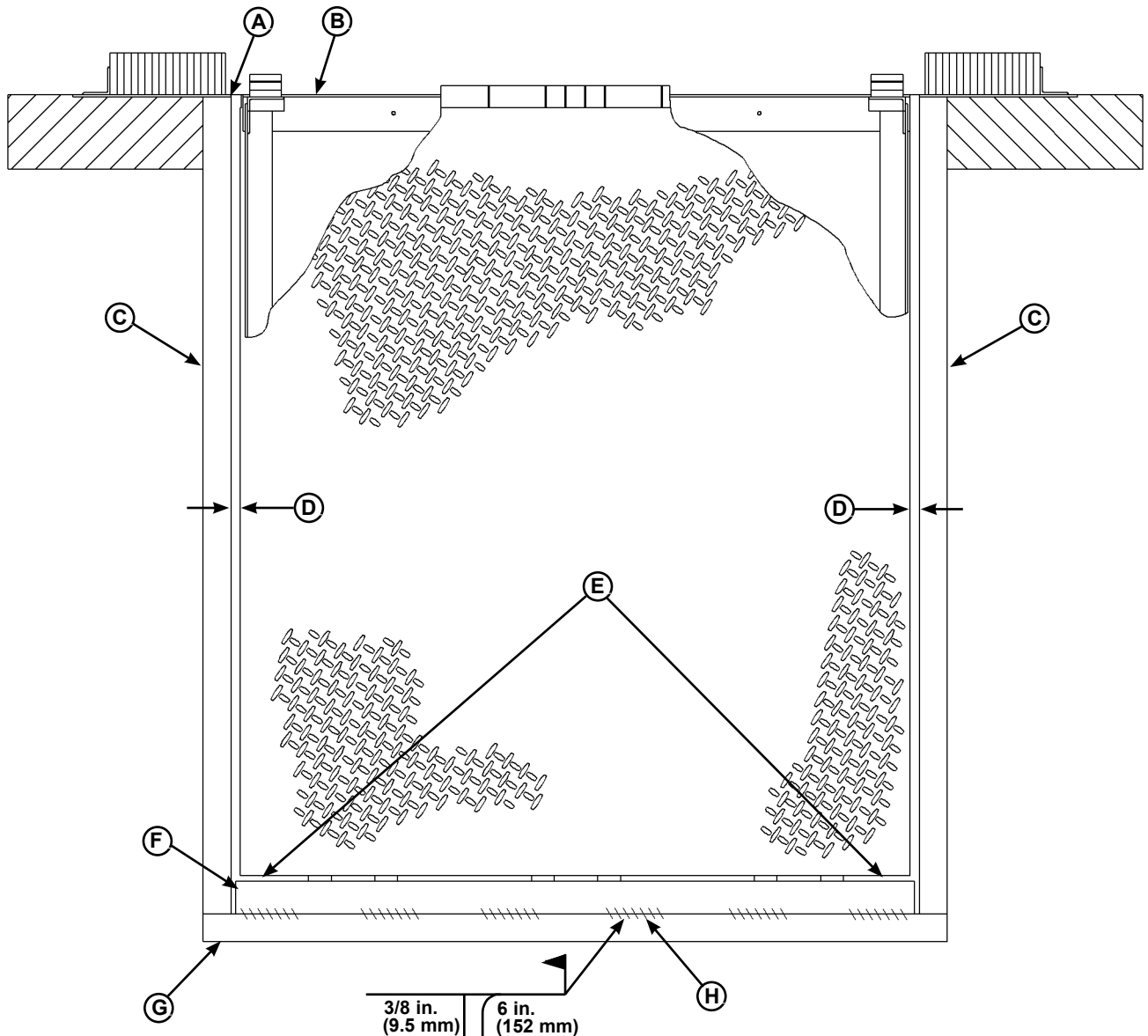
5. Using an appropriate lifting device connected to the lifting brackets, lower dock leveler into the pit so rear hinge frame angle (H) is tight against rear pit curb angle (F, p.13) across full width of the leveler frame.
6. Allow rear of dock leveler to rest on the rear shims while keeping the front of the dock leveler level with the dock floor.
7. For all AP models, add shims at front shim locations (C&D) so front of dock leveler will stay level with dock floor when leveler is resting fully on shims.



WARNING

The dock leveler is heavy. Use chains and a lifting device with the appropriate lifting capacity

8. With rear hinge frame angle (F) tight against rear pit curb angle (G), perform/check the following:
 - Pry between the platform and rear hinge frame angle at locations (E) to make sure rear edge of platform is parallel to the rear hinge frame angle (F).
 - Gap (D) must exist equally along both sides of leveler so weather seal (if equipped) will not bind during dock leveler operation.
9. If gap (D) cannot be obtained equally at both sides of leveler, grind or add material at the rear edge of rear hinge frame angle (F) as needed.
10. Allow the dock leveler to rest fully on the shim stacks. Check that a smooth and level transition exists between the dock floor and the dock leveler platform. Add or remove shims as necessary until a smooth transition is obtained.
11. If leveler cannot be squared and/or made level as instructed in steps 8 — 10, contact Technical Services.



A— Front of Dock Pit
B— Dock Leveler Frame

C— Side Pit Curb Angle
D— Gap [3/4 in. (19 mm)
Minimum]

E— Pry Locations
F— Rear Hinge Frame
Angle

G— Rear Pit Curb Angle
H— Flare Bevel Weld, Typical
(To Fit Spacing)

12. With the leveler square in the pit and flush with the surrounding dock, remove the banding on the lip of the leveler. Manually raise the platform.
13. Connect the blower motor to the temporary power supply.
14. Slowly raise the platform. Check for binding as platform is being raised.
15. If binding occurs, lower the platform. Reposition leveler and/or add or remove shims as necessary. Slowly raise platform again. If platform still binds, contact Technical Services for further instructions.

16. All AP models - Once leveler is flush, square and does not bind:

- a. Install shims under maintenance prop (D) page 11, where prop attaches to leveler frame. Make sure prop is solidly shimmed.
- b. Raise the dock to the fully open position.
- c. Raise maintenance prop to the service (upright) position and lock prop in this position using an OSHA approved locking device*.

17. Disconnect power supply from motor.

* Refer to OSHA regulation 1910.146. Confine Space

* Refer to OSHA regulation 1910.147. Lockout/Tagout

INSTALLATION

18. Remove air bag and pallet support from the leveler by disconnecting air bag positioning rods from hooks on the underside of platform (Figure 1) and removing the band clamp from the motor coupler. (Figure 2)
19. Remove or protect the blower motor from weld sparks and splatter.
20. With the rear hinge frame angle (F) tight against the rear pit curb angle and flush with the curb angle (G), weld the rear hinge frame angle (F) to the rear pit curb angle (G) using a 3/8 in. (9.5 mm) flare bevel skip weld— each weld being 6 in. (152 mm) long.
 - Start at each end with a 6 in. (152 mm) long weld. Space all the other welds out evenly leaving approximately 6 in. (152 mm) space between each weld.
21. All model levelers: Install shims at locations (B,C,D, p.11) using the pyramid or stepped shimming method. Make sure the platform is level from side-to-side as well as from front-to-back and flush with dock floor.



Figure 1



Figure 2

WARNING

Two people are required to engage the maintenance prop: one person to operate the lifting device, the other person to engage the maintenance prop.

WARNING

DO NOT use the maintenance prop to support the raised platform until the maintenance prop has been properly shimmed and welded. The shims must be welded to each other, the leveler frame, and to the front pit steel.

22. Weld front of dock leveler frame (B) to shims located under the keepers, then weld the shims to the front pit curb steel.
23. Finish weld all shims using a fillet weld.
 - Weld all shims within each shim stack to each other, then weld the shim stack to the leveler frame.
 - Weld the front leveler frame shim stacks to the front pit curb steel.
24. When all welding has been completed, paint all the welds and shims.

NOTICE

DO NOT weld before disconnecting all electrical components.

DO NOT weld before removing air bag, air bag support pallet and hoses from leveler.

Protect or remove the blower motor before welding.

Failure to follow these instructions may result damage to these components from stray sparks and weld splatter.

WARNING

DO NOT grind or weld if hydraulic fluid or other flammable liquid is present on the surface to be ground or welded.

DO NOT grind or weld if uncontained hydraulic fluid or other flammable liquid is present. Stray sparks can ignite spills or leaks near the work area. Always clean up the oil leaks and spills before proceeding with grinding or welding.

Always keep a fire extinguisher of the proper type nearby when grinding or welding.

NOTICE

DO NOT weld continuously along the full length of the rear hinge frame angle. This can put unnecessary stress on the leveler components, causing the leveler to malfunction and shorten the life span of the affected components.

NOTE: The illustration on page 13 shows a typical weld pattern. The weld pattern will vary slightly depending on size of dock leveler.

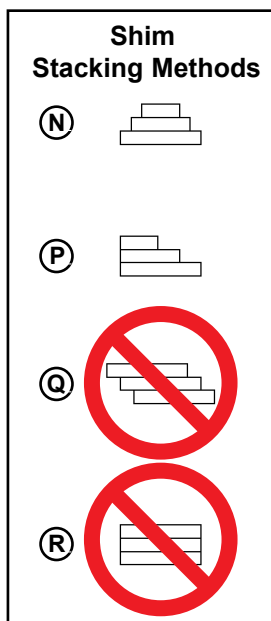
NOTICE

DO NOT connect the dock leveler electrical wiring and ground connections until all welding has been completed.

DO NOT ground welding equipment to any hydraulic or electrical components of the dock leveler. Always ground welding equipment to the dock leveler frame, NEVER to the platform.

WARNING

Make sure the platform is properly supported in the raised position before entering the pit to finish weld the shims.



* For left/right orientation of dock leveler, see inside back cover of this manual.

INSTALLATION

Install Control Panel and Wiring

WARNING

The electrical power must be OFF prior to electrical installation. For maximum protection, use an OSHA approved locking device to lock out all power sources. Only the person installing the equipment should have the key to unlock the power source.

WARNING

DO NOT make any final electrical connections until all welding has been completed.

CAUTION

All electrical work — including the installation of the disconnect panel, control panel, and final connections to the pit junction box — must be performed by a certified electrician and conform to all local and applicable national codes.

CAUTION

When drilling access hole in the control box, DO NOT penetrate too deep, components may be damaged.

DO NOT turn control upside down to drill any access holes. To prevent damaged to electrical components from debris cover components prior to drilling

Seal all conduit entrances to prevent moisture from entering the control box.

DO NOT use compressed air to clean control box. Recommended to vacuum debris from inside.

DANGER

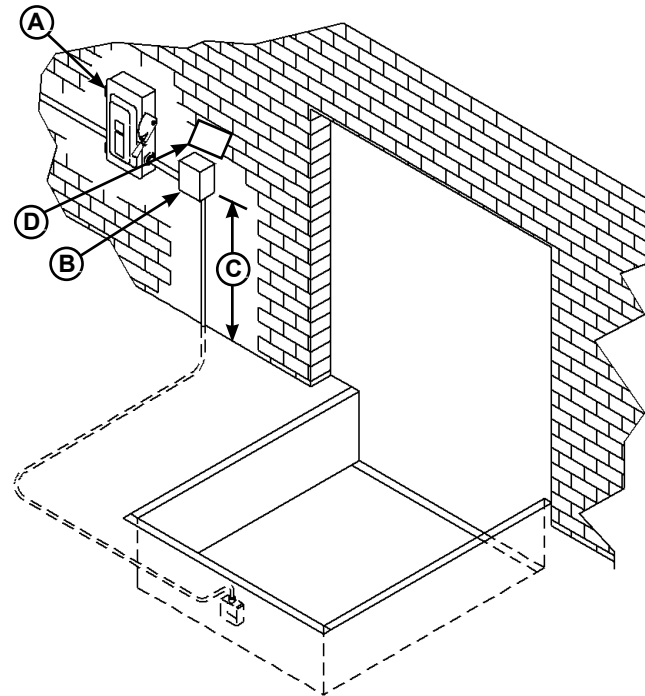


Arc Flash and Shock Hazard PPE [Personal Protection Equipment] Required

De-energize equipment before working on or inside. Do not open cover without appropriate PPE. Refer to NFPA 70E for PPE requirements. This panel may contain more than one power source.

Hazardous Voltage
Will Result in Death
or Serious Injury

10/16/18 Rev A



A— Disconnect Panel (provided by others)
B— Control Panel C— Distance, 48 in. (1219.2 mm)
D— Placard

1. Mount the push button control panel (B) so bottom of control panel-to-dock floor distance (C) is 48 in. (1219.2 mm).
2. Install electrical disconnect panel (A) if not already installed.
3. Install and connect the control wiring.
4. Re-install the air bag, air bag support pallet and blower motor.
5. Connect the dock leveler power cable to the outlet in the pit junction box. Refer to the electrical drawings supplied with the dock leveler.
6. After all electrical connections in the pit have been made, raise the leveler, disengage the maintenance prop and allow the platform to lower.
7. Install the Placard(s) (D), in close proximity to the control box and in plain sight.

Put New Dock Leveler Into Service

1. Disconnect the external lifting device and chains from the lifting brackets.
2. Check that the leveler is flush with the dock floor and that the platform lip contacts both lip keepers evenly.

NOTE: If an excessive transition exists between the dock floor and leveler and/or lip does not contact both lip keepers evenly, contact Technical Services for further instructions.
3. Install the dock bumpers as required.
4. Turn the main electrical power ON.
5. Raise the leveler platform fully by depressing and holding the RAISE button.
6. Release the RAISE button to lower the platform. As long as there is no transport vehicle present at the dock, the platform will lower to the full below-dock position then the lip folds.

NOTE: If a transport vehicle is present, the platform will lower until the lip rests on the transport vehicle bed. (See Operating Instructions in Operation section.)

7. When the platform lowers to the full below-dock position, the lip will fold. Depress and hold the RAISE button until the platform rises just enough to clear the lip keepers, then release the RAISE button to allow the platform to lower to the cross-traffic (stored) position (lip engages lip keepers).
8. Perform steps 5 – 7 at least four times make sure the leveler functions properly and there is no binding.
9. Raise the platform fully. Hold the platform at this position using the RAISE button and move the maintenance prop to the service (upright) position. Release the RAISE button to allow the platform to lower until it is resting on the maintenance prop, insert prop pin.

10. With the maintenance prop supporting the platform, remove the lifting brackets.
11. Support the toe guards, remove the bolt used in shipping and carefully lower the toe guards.
12. Remove prop pin and depress and hold the RAISE button until the maintenance prop drops to its stored position. Release the RAISE button and allow the platform to lower fully. Check operation of toe-guards.
13. When the platform lowers to the full below-dock position, the lip will fold. Depress and hold the RAISE button until the platform rises to clear the lip keepers, then release the RAISE button to allow the platform to lower to the cross-traffic (stored) position (lip engages lip keepers).



WARNING

Two people are required to engage the maintenance prop: one person to operate the lifting device, the other person to engage the maintenance prop.



WARNING

Always stand clear of platform lip when working in front of the dock leveler.

OPERATION

Operating Instructions

DANGER

Stay clear of dock leveler when transport vehicle carrier is entering or leaving dock area.

DO NOT move or use the dock leveler if anyone is under or in front of leveler.

Keep hands and feet clear of pinch points. Avoid putting any part of your body near moving parts.

WARNING

Only trained personnel should operate the dock leveler.

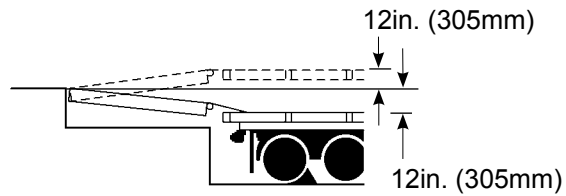
DO NOT use a broken or damaged dock leveler. Make sure proper service and maintenance procedures have been performed on leveler before using.

Transport vehicle wheels must be chocked unless the vehicle restraint is used. Never remove the wheel chocks until loading/unloading is finished and transport vehicle driver has been given permission to leave.

Make sure platform lip rests on the transport vehicle bed with at least 4 in. (102 mm) of overlap.

Maintain a safe distance from side edges of leveler during the loading/unloading process.

WARNING



The AP pneumatic dock leveler is designed to compensate for a maximum ± 12 in.* (305 mm) of height difference between the loading dock and the transport vehicle bed. DO NOT use the dock leveler if the transport vehicle bed is more than 12 in. (305 mm) higher or lower than the dock floor.

*Service height may vary with design specifications

DO NOT overload the dock leveler.

DO NOT operate any equipment while under the influence of alcohol or drugs.

DO NOT leave equipment or material unattended on the dock leveler.

The dock leveler operating instructions are divided into the two methods of loading and unloading:

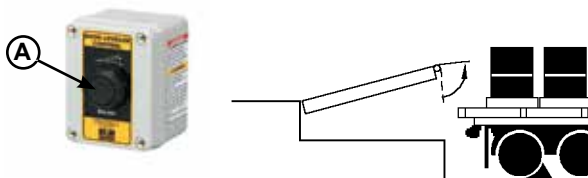
- **For ramp loading and unloading, see Ramp Loading/Unloading Instructions on page 19.**
- **For end loading and unloading, see End Loading/Unloading Instructions on page 20.**

Operating Instructions—Continued

Ramp Loading/Unloading Instructions

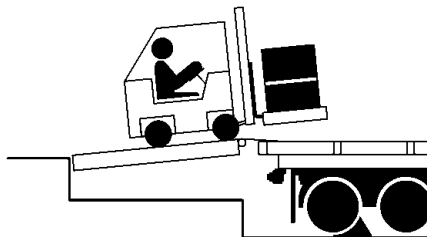
NOTE: If end unloading is required, see End Loading/Unloading Instructions on page 20.

1. Check to make sure transport vehicle is positioned squarely against both dock bumpers.
2. Instruct driver to remain at the dock until the loading or unloading process has been completed.
3. Chock the transport vehicle wheels or use vehicle restraint if available.



A—RAISE Button

4. Raise the platform and extend the lip onto transport vehicle as follows:
 - a. Raise the platform by depressing and holding RAISE button.
 - b. Hold the RAISE button until the lip is fully extended, then release the RAISE button. The platform will lower until the lip is resting on the transport vehicle bed.
 - c. Make sure that the lip is fully extended and supported on the transport vehicle along the entire width of the lip with at least 4 in. (102 mm) of lip overlapping the transport bed.

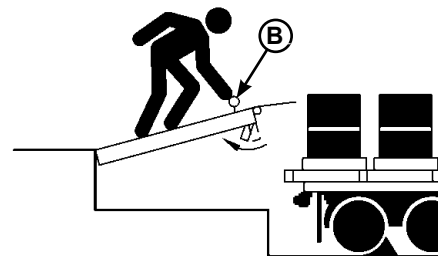


5. Proceed with loading or unloading the transport vehicle.
6. When loading or unloading is finished, raise the platform by depressing and holding RAISE button (A).
7. Hold the RAISE button until the lip folds enough to clear the transport vehicle bed, then release the RAISE button. The lip will fold and the platform will return to the cross-traffic position.

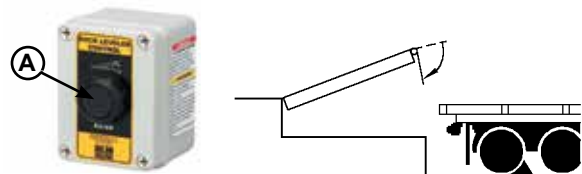
Below Dock Loading/Unloading Instructions

NOTE: If end unloading is required, see End Loading/Unloading Instructions on page 20.

8. Check to make sure transport vehicle is positioned squarely against both dock bumpers.
9. Instruct driver to remain at the dock until the loading or unloading process has been completed.
10. Chock the transport vehicle wheels or use vehicle restraint if present.
11. Raise the platform by depressing the RAISE button (A) to fully raise the leveler and extend the lip.
12. Walk out on the leveler, Pull and Hold the release ring (B) until the platform lowers onto the transport vehicle. Make sure there is a minimum



Loading/Unloading Completed - Reset Leveler



A—RAISE Button

- of 4" of lip overlapping the transport vehicle bed.
13. When loading or unloading is finished, raise the platform by depressing and holding RAISE button (A).
14. Hold the RAISE button until the lip folds completely clearing the transport vehicle bed, then release the RAISE button. The lip and the platform will return to the cross-traffic position.
15. Remove chocks from transport vehicle wheels or release the vehicle restraint if used.
16. Indicate to driver that transport vehicle may leave the dock.

OPERATION

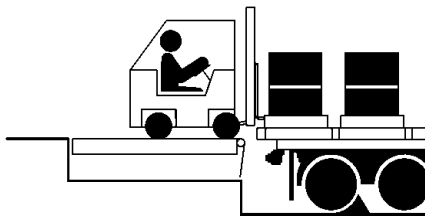
Operating Instructions—Continued

End Loading/Unloading Instructions

NOTE: If ramp loading is required, see Ramp Loading/Unloading Instructions on page 19.

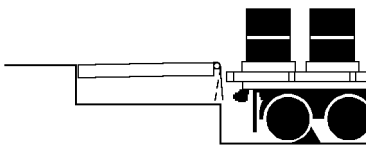
End loading or unloading can be done with the dock at the cross-traffic position or below-dock position, depending on the height of the transport vehicle bed.

1. Check to make sure transport vehicle is positioned squarely against both dock bumpers.
2. Instruct driver to remain at the dock until the loading or unloading process has been completed.
3. Chock the transport vehicle wheels or use vehicle restraint if available.
4. If transport vehicle bed is at or above dock floor level, leave leveler at the cross-traffic position and proceed with loading or unloading.



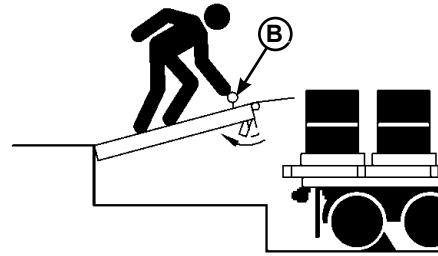
End Loading/Unloading — Platform at Cross-Traffic Position.

5. If transport vehicle bed is below the dock floor level, perform steps 6–13.

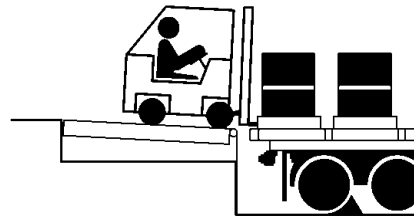


End Loading/Unloading — Platform Too High
Use Below-Dock Position.

6. Depress the Raise button to the platform high enough to clear the lip keepers, but not high enough to extend the lip.
7. Walk out on the leveler, pull and hold the safety leg retract pull ring (B) (located in the recess at the front of the platform). This will cause the lip to extend away from the lip keepers and the cross traffic safety legs to fold to allow the leveler to lower to the below dock position.



8. When the platform lip clears the lip keepers, continue to hold the pull chain as the leveler lowers to the below-dock service position. The platform will drift down to the full below-dock position.
9. Proceed with loading or unloading.

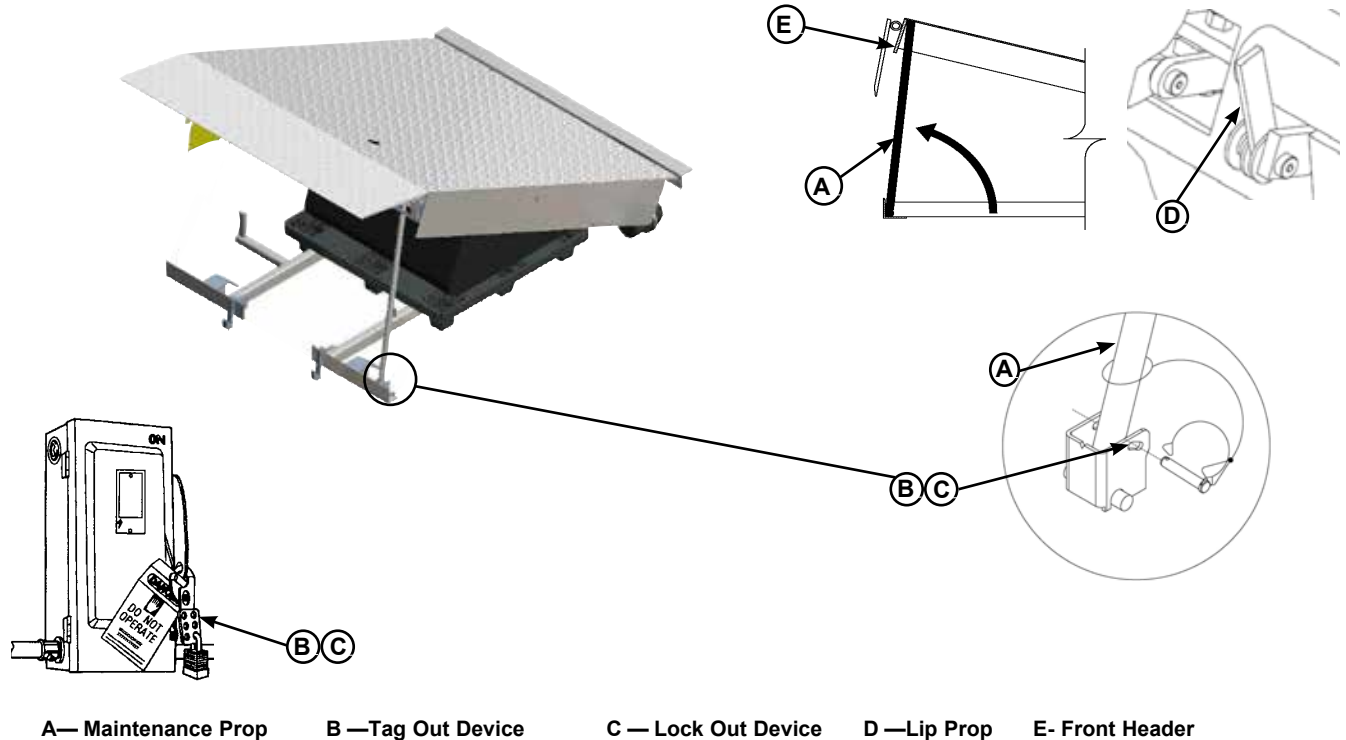


End Loading/Unloading — Platform at Below-Dock Position.

NOTE: When end unloading is finished and access to the rest of the transport vehicle is still required, the platform lip will need to be extended. See Ramp Loading/Unloading Instructions on page 19 for further instructions.

10. When the loading or unloading is finished, return the dock leveler platform to the cross-traffic (stored) position.
11. Depress the RAISE button (A) until the lip clears the lip keepers. Release RAISE button, leveler will return to the stored or cross traffic position.
12. Remove chocks from transport vehicle wheels or release the vehicle restraint if used.
13. Indicate to the driver that the transport vehicle may leave the dock.

Service Dock Leveler Safely



! WARNING

When service under the dock leveler is required, always lock all electrical disconnects in the OFF position after raising the platform and engaging the maintenance prop.

! WARNING

Always post safety warnings and barricade the work area at dock level and ground level to prevent unauthorized use of the dock leveler before maintenance is complete.

! WARNING

Always stand clear of the dock leveler lip when working in front of the dock leveler.

The maintenance prop **MUST** be in the service position when working under the dock leveler. For maximum protection, use an OSHA approved locking device to lock the maintenance prop in the service position. Only the person servicing the equipment should have the key to unlock the maintenance prop.

Unless the dock leveler is equipped with a tethered remote, two people are required to engage the maintenance prop: one person to operate the unit, the other person to engage the maintenance prop.

Whenever performing maintenance under the dock leveler platform, support the platform with the maintenance prop (A). Position the maintenance prop behind front header plate (E) while staying clear of the lip. The Lip Prop may be used to keep the lip extended (D). Additional supports should be used to prevent the lip from collapsing if working under the leveler. Lock the maintenance prop in the service (upright) position using an OSHA approved lockout device and tagout device* (B&C).

Whenever servicing the dock leveler, lock the electrical power disconnect in the OFF position. Use only an OSHA approved lockout/tagout device and tagout device* (B&C).

Only the person servicing the equipment should have the capability to remove the lockout/tagout devices. The Tag out devices* must inform that repairs are in process and clearly state who is responsible for the lockout condition.

* Refer to OSHA regulation 1910.146. Confine Space

* Refer to OSHA regulation 1910.147. Lockout/Tagout

MAINTENANCE

Periodic Maintenance



A— Lip Hinge Area
B— Lip Maintenance Prop
Pivot

C— Lip Link Pivots
D— Platform Hinge Area

E— Lip Assist Pin
F— Lip Linkage Pivot

G — Safety leg linkage
pivots



Under platform service



Air Filter, service under rear of platform

Regular maintenance must be performed on a weekly and quarterly schedule.

FOLLOW ALL SAFETY PRECAUTIONS

Weekly Maintenance

- Operate the dock leveler through the complete operating cycle to maintain lubrication.

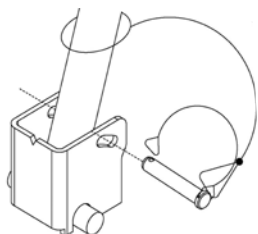
NOTE: To thoroughly inspect the platform hinge area, put the platform in the full below-dock position.

- Inspect the platform hinge and the lip hinge areas. Look for cracks in the welds or damage. The hinge areas must be kept free of dirt and debris. Build-up of foreign material in the hinge areas will cause abnormal operation.
- Inspect the area under the platform, around and under the air bag. Look for cracks in the welds or damage. Build-up of foreign material in this area may damage air bag components, causing abnormal operation.
- Inspect air bag and seams for signs of wear or damage.

NOTICE

Failure to properly lubricate the dock leveler will cause abnormal operation of the leveler.

! DANGER



A maintenance prop permanently attached and hinged to the unit with means for lock out/tag out requirements (per OSHA 1910.147) is included with each pit style dock leveler. In addition, it is recommended and good safety practice to use an additional means to support the dock platform and lip anytime when physically working in front of or under the dock leveler. This additional means may include, but not limited to a boom truck, fork truck, stabilizing bar or equivalent.

Quarterly Maintenance

- Perform Weekly Maintenance Items
- Lubricate the following areas with light weight machine oil:
 - (A)— Lip hinge area unless equipped with grease fittings (apply oil to the top of the entire length of lip hinge when platform is at the full below-dock position and lip is folded)
 - (D)— Platform hinge area (apply oil to top of all platform hinges when platform is at the full below-dock position)

(E)— Lip assist rod

NOTE: Apply grease to lip hinge grease fittings if equipped.

- Lubricate the following areas with light-weight machine oil:

(B)— Lip maintenance prop pivot

(C)— Lip link pivots

(F)— Lip Linkage assembly pivot

(G)— Safety leg linkage pivots

- Lubricate the following areas with white lithium grease (if equipped with grease fittings):

(A)— Lip hinge area (inject grease into all the lip hinge grease fittings)

(D)— Platform hinge area (inject grease into all the platform hinge grease fittings)

(E)— Lip assist pin

ADJUSTMENTS

Adjusting the Latch and Lip Actuator Spring Tension

WARNING

When service under the dock leveler is required, always lock all electrical disconnects in the OFF position after raising the platform and engaging the maintenance prop.

WARNING

Always post safety warnings and barricade the work area at dock level and ground level to prevent unauthorized use of the dock leveler before maintenance is complete.

WARNING

Always stand clear of the dock leveler lip when working in front of the dock leveler.

The maintenance prop and lip maintenance prop **MUST** be in the service position when working under the dock leveler. For maximum protection, use an OSHA approved locking device to lock the maintenance prop in the service position. Only the person servicing the equipment should have the key to unlock the maintenance prop.

Unless the dock leveler is equipped with a tethered remote, two people are required to engage the maintenance prop: one person to operate the unit, the other person to engage the maintenance prop.



A— Lip Latch Spring Adjustment

B— Lip Actuator Spring Adjustment

Adjusting Lip Latch Spring Tension

This adjustment is set at the factory and should not require additional adjustment.

Unlike mechanical levelers, the lip will not immediately begin to fold as the platform returns to the stored position.

After the platform is fully raised, and the lip extends, the lip latch is designed to hold the lip in the extended position until the platform drifts down to the below dock position.

If the lip does not remain extended check proper engagement of the lip latch.

NOTE: Use two-turn increments when adjusting lip assist spring. Check lip operation after each adjustment. Repeat until proper operation is obtained.

Adjust spring tension as follows:

1. Loosen jam nut on (A).
2. To increase spring tension, turn adjustment nut on (A) clockwise.
3. To decrease spring tension, turn adjustment nut on (A) counterclockwise.
4. Tighten jam nut.

Recheck operation of platform and lip. Readjust lip latch spring tension as needed.

Adjusting Lip Actuator Spring Tension

This adjustment is set at the factory and should not require additional adjustment.

Unlike mechanical levelers, the lip will not immediately begin to fold as the platform returns to the stored position.

The leveler lip remains extended as the platform drifts down to the below dock position. The lip will automatically fold when the platform is resting on the safety legs in the below dock position

1. Check air bag and hoses for possible leaks.
2. If the lip does not fully extend additional spring tension may be needed.

NOTE: Use two-turn increments when adjusting lip assist spring. Check lip operation after each adjustment. Repeat until proper operation is obtained.

Adjust spring tension as follows:

1. Loosen jam nut on (B).
2. To increase spring tension, turn nut on (B) clockwise.
3. To decrease spring tension, turn nut on (B) counterclockwise.
4. Tighten jam nut.

Recheck operation of platform and lip. Readjust lip actuator assist spring tension as needed.

ADJUSTMENTS

Adjust Lip Stop Bolt

WARNING

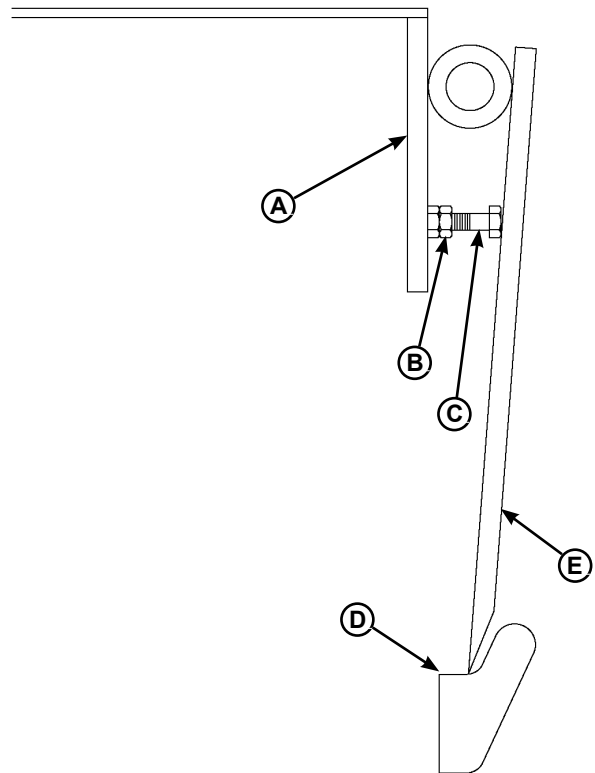
Always post safety warnings and barricade the work area at dock level and ground level to prevent unauthorized use of the dock leveler before maintenance is complete.

WARNING

Always stand clear of the dock leveler lip when working in front of the dock leveler.

WARNING

The platform maintenance prop MUST be in the service position when working under the dock leveler. For maximum protection, use an OSHA approved locking device to lock the maintenance prop in the service position. Only the person servicing the equipment should have the key to unlock the maintenance prop.



A— Platform Frame
B— Jam Nut
C— Stop Bolt

D — Lip Keeper
E — Lip

Check that lip (E) is fully resting on the lip keepers (D) and at the lowest part of the keeper cradle. If lip is not resting properly in keepers, perform the following adjustment.

1. Fully raise platform and engage the maintenance prop. Manually raise the lip and engage lip maintenance prop.
2. Loosen jam nut (B).
3. Adjust stop bolt (C) as necessary.
 - Turn stop bolt “in” (clockwise) to allow lip to fold closer to platform frame (A).
 - Turn stop bolt “out” (counterclockwise) to hold lip further away from platform frame (A).
4. Tighten jam nut.
5. Disengage lip maintenance prop.
6. Depress RAISE button, disengage maintenance prop, allow platform to lower to cross-traffic (stored) position.
7. Check lip position in both keepers. Repeat procedure if necessary.

Snubber Chain Assembly

TABLE A		BILL OF MATERIAL				
DOCK PLATFORM LENGTH (FT.)	# OF LINKS FROM LIP ASSIST ASSEMBLY TO SHACKLE	ITEM	QTY	PART NO.	DESCRIPTION	SIZE
6	31-33	1	1	2101-0334	SHACKLE (PEERLESS # 8058405)	3/8"
8	32-34	2	REF	9514-0161	LIP ASSIST ASSEMBLY	DLM, DPLA-0338
10	33-35	3	REF	8435-XXXX	FRAME WELDMENT	D CAD

NOTES:

1. THE ABOVE DOCK SERVICE RANGE OF THE LEVELER IS DETERMINED BY THE OVERALL LENGTH OF THIS CHAIN AND SHACKLE ASSEMBLY.

2. ABOVE DOCK SERVICE RANGE IS ADJUSTED BY ADJUSTING THE LINK QUANTITY BETWEEN LIP ASSIST ASSEMBLY AND SHACKLE. FINAL NUMBER OF LINKS MAY VARY FROM TABLE "A" DEPENDING UPON APPLICATION.

3. OVERALL CHAIN LENGTH IS DETERMINED BY:
- ENSURE MAINTENANCE PROP IS ABLE TO BE LOCATED AGAINST BACKSIDE OF PLATFORM HEADER WHEN RAISED
- ENSURE MAINTENANCE PROP IS NOT ABLE TO ROTATE OUT PAST THE PLATFORM HEADER WHEN RAISED

4. ANY REMAINING LINK(S) ARE TO BE CUT OFF.

5. SHACKLE TO HAVE BLUE LOCKTITE APPLIED TO THREAD TO SECURE THREADED PIN.

CHAIN LINKS
SEE TABLE "A"
FOR LENGTH

SHACKLE

VIEW IS FOR
REFERENCE ONLY

REMAINING LINK(S)

TROUBLESHOOTING

WARNING

When service under the dock leveler is required, always lock all electrical disconnects in the OFF position after raising the platform and engaging the maintenance prop.

WARNING

Always post safety warnings and barricade the work area at dock level and ground level to prevent unauthorized use of the dock leveler before maintenance is complete.

WARNING

Always stand clear of the dock leveler lip when working in front of the dock leveler.

The maintenance prop MUST be in the service position when working under the dock leveler. For maximum protection, use an OSHA approved locking device to lock the maintenance prop in the service position. Only the person servicing the equipment should have the key to unlock the maintenance prop.

Unless the dock leveler is equipped with a tethered remote, two people are required to engage the maintenance prop: one person to operate the unit, the other person to engage the maintenance prop.

Before performing the detailed troubleshooting procedures, check the following items first:

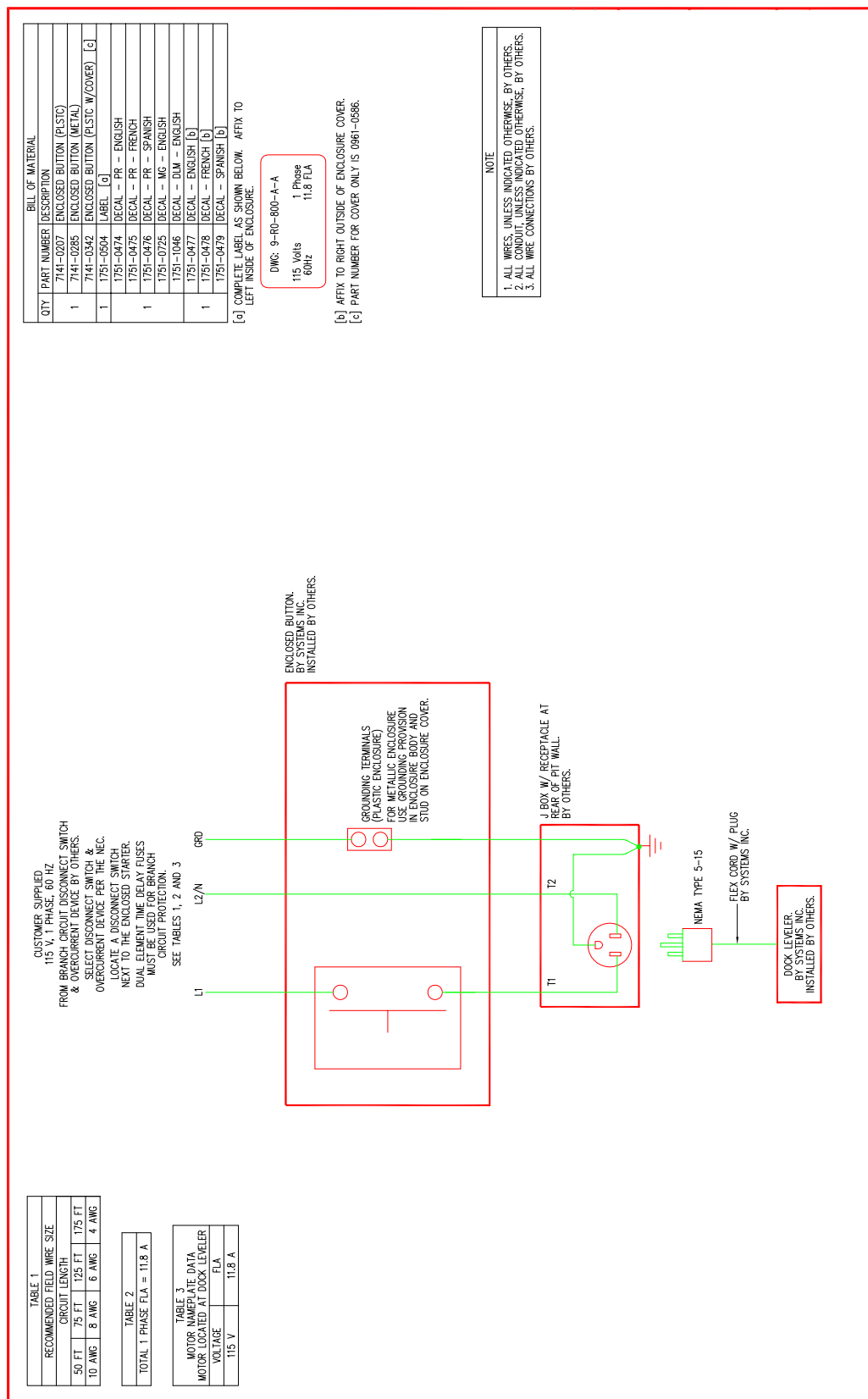
- Check all fuses and circuit breakers. Replace any blown fuse(s) with a fuse of equal specification and reset circuit.
- Make sure the correct voltages are present at the proper locations inside the control panel(s).

Symptom	Possible Cause	Solution
Platform does not rise. Motor does not energize.	Motor fuse blown.	Reset circuit panel or disconnect fuse. Determine cause of overload.
	Motor failure	Check voltage to motor. <ul style="list-style-type: none">• If voltage is present and motor does not energize, replace motor.• If voltage is not present, check all components in series with the motor.
Platform does not rise. Motor hums, but does not run.	Incorrect voltage is present on line.	Check line for proper voltage <ul style="list-style-type: none">• If proper voltage is not present, check all components in series with the motor.• If proper voltage is present and motor does not run, check for obstructions.• If no obstructions are found, replace motor.
Platform does not rise. Motor energizes, but does not run.	Line voltage too low.	<ul style="list-style-type: none">• Check wiring to motor for high resistance.• Check for loose or corroded connections.• Check if gauge of wires to motor are of correct size and specification for load requirement. Replace if necessary.

TROUBLESHOOTING

Symptom	Possible Cause	Solution
Platform rises slowly	Air bladder or connecting ducts punctured	Check air bladder and ducting for damage replace as needed
	Damaged or restricted ducting	Replace damaged ducting or remove restriction
	Air intake clogged	Remove intake filter, clean or replace as needed
	Dock leveler binding	Check for visible obstructions that could cause binding. Remove obstructions. If no obstructions found, call Technical Services. See inside back cover for phone number and address.
Platform does not rise to full height.	See Platform Rises Slowly	See Platform Rises Slowly See Periodic Maintenance in the Maintenance section.
Platform DOES rise to full height, but lip DOES NOT extend or extend fully.	Lip actuator spring needs additional tension.	Inspect lip actuator chain, repair or replace as needed.
Lip extends but does not remain extended as leveler drops.	Lip latch spring needs additional tension.	See Adjustment Section: Lip Latch Spring. <ul style="list-style-type: none"> • Increase tension as needed to keep latch engaged. • Clean any debris from lip latch area. • Lubricate as instructed in maintenance section. • Replace air bladder
	Air bladder damaged	

Controls





DANGER

- Read and follow all instructions, warnings, and maintenance schedules in the manual and on placards.
- Operation and servicing of dock leveler is restricted to authorized personnel.

Always chock transport vehicle wheels or engage vehicle restraint and set parking brakes before operating dock leveler or beginning to load or unload.

Before activating dock leveler, ensure lip avoids contact with transport vehicle sides and cargo. If lip does not lower to transport vehicle bed, reposition transport vehicle.

Ensure the transport vehicle floor supports extended lip or the leveler frame (lip keepers or below dock endload supports) supports the ramp before driving on ramp.

Stay clear of hinges and front and sides of moving dock leveler.

Never use hands or equipment to move the ramp or lip.

Never use damaged or malfunctioning dock leveler. Report problems immediately to supervisor.

Always store dock leveler and remove people, material, and equipment from ramp before vehicle leaves the dock.

DO NOT ENTER PIT unless dock leveler is securely supported by the maintenance prop.

Disconnect power and follow proper lockout/tagout procedures for the dock leveler before entering the dock leveler pit or doing any repair or inspection under the dock leveler.

FAILURE TO FOLLOW THESE INSTRUCTIONS WILL RESULT IN DEATH OR OTHER SERIOUS INJURY.

Scan to view our owner's/user's manuals online.
www.DockSystemsInc.com
1.800.643.5424
Call for additional placards, or manuals, or with questions regarding proper use, maintenance, and repair of dock leveler.

POWERAMP
DIVISION OF
SYSTEMS, INC.
Loading Dock Equipment
1751-0874 Rev C

OPERATING INSTRUCTIONS
POWERED DOCK LEVELERS

NORMAL OPERATION

1. Raise the platform by depressing and holding the RAISE button.
2. Hold the RAISE button until the lip is fully extended, then release the RAISE button. The platform will lower until lip is resting on the transport vehicle.

STORING LEVELER

1. Depress the RAISE button until the lip is completely folded. When the lip is folded, release the RAISE button. The platform will lower returning to the cross-traffic position.

BELOW DOCK ENDLOADING

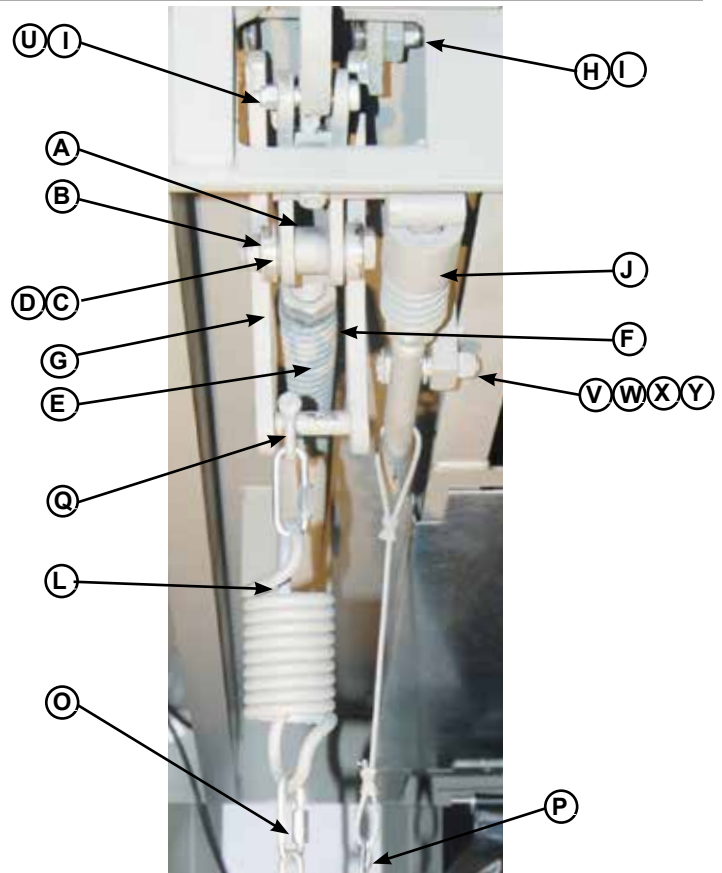
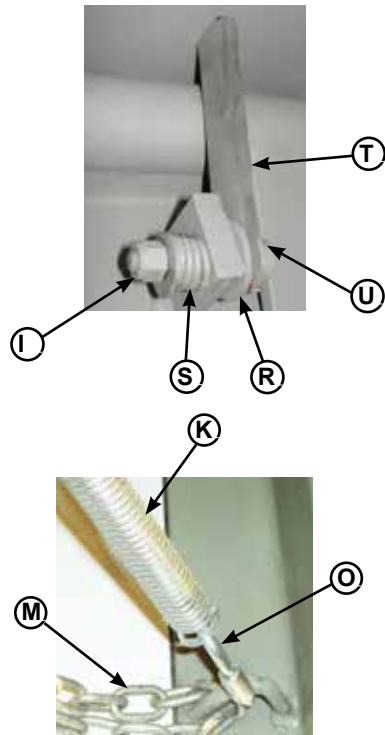
- (AIR POWERED ONLY) Depress and hold the RAISE button until the leveler is 12" above dock level. Pull the below dock level chain until the leveler lowers the full below dock position.
- (HYDRAULIC ONLY) Depress and hold the RAISE button until the leveler is fully raised. As the lip starts to extend, release the RAISE button. The leveler will lower to the below dock position provided the lip extension allows the lip to clear the lip keepers.
- (HYDRAULIC WITH INFINITE LIP CONTROL) If equipped, raise the platform by depressing and holding the RAISE button. When the lip is just above the lip keepers, simultaneously depress and hold the RAISE button and the LIP OUT button until lip has extended beyond the lip keepers. Release both buttons.

NOTE: If equipped, depressing E-STOP button will stop platform from lowering.

Item	Quantity	Part Number	Description
A	1	7141-0207	Push Button Controller, 9-RO-800-A-A
B	1	1751-0474	Decal (English)
C	1	1751-0477	Decal (English)
D	1	1751-0736	Decal Arc Flash
E	1	1751-0874	Placard, AP

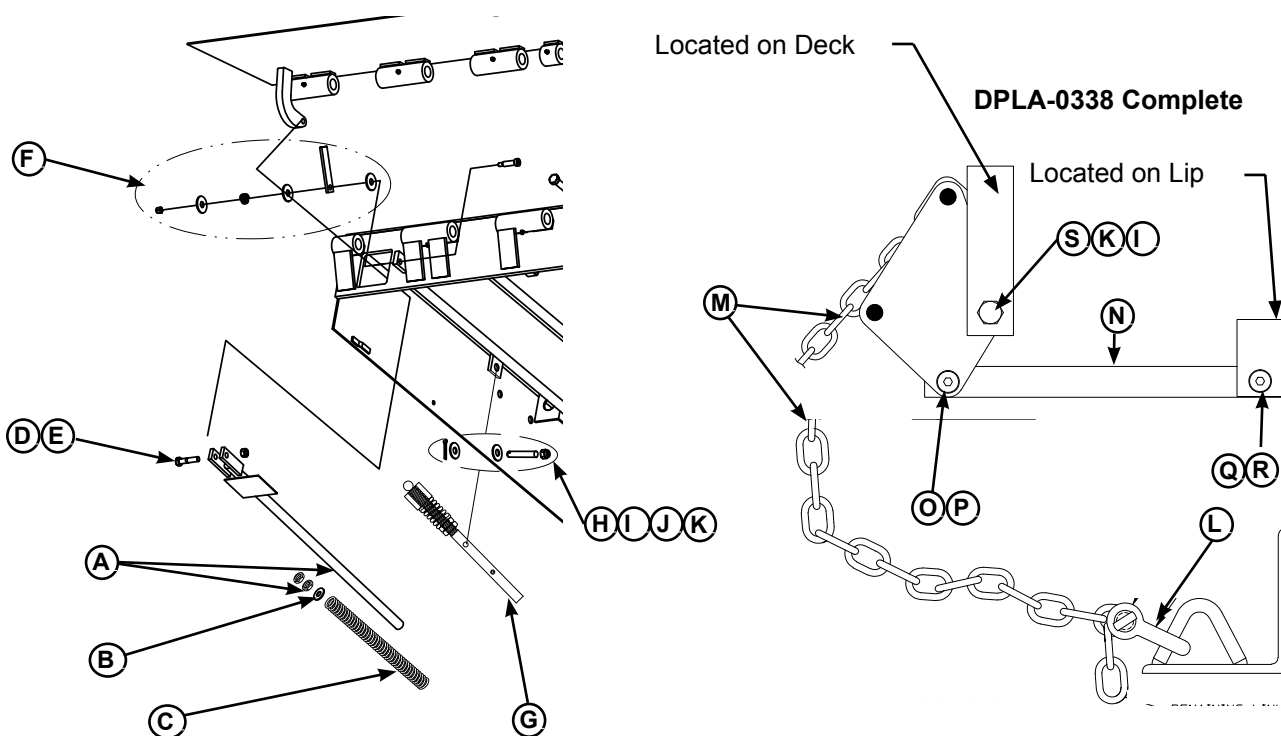
PARTS

Lip Activation Before 2012



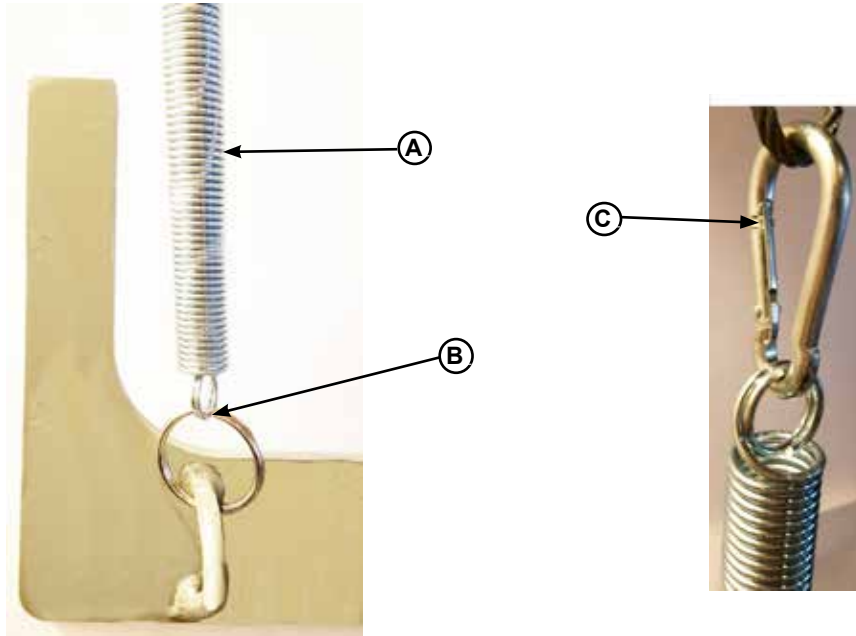
Item	Quantity	Part Number	Description
A	1	9514-0107	Lip Latch Assy.(bolts on to DPLA-2130)
	1	DPLA-2130	Lip Assist Rod Complete 34" Lg (Includes Items A-D)
B	2	DOTH-2449	* Bearing
C	1	DOTH-2076	* Bolt, 5/8-11 unc x 3-1/2"
D	1	DOTH-2160	* Nut,Nylon
E	1	DOTH-2546	Spring, Lip assist
F	2	DOTH-2225	Washer
G	1	DPLA-2126	Lip Banger
H	2	DOTH-2061	Bolt, Shoulder 1/2" x 1-1/2Lg."
I	3	DOTH-2131	Nut, Nylon lock 3/8"
J	1	5775-0004	Lip latch Assembly
K	1	0941-0013	Lip Latch Rod Spring
L	1	DOTH-2555	Spring,Snubber
M	1	DPLA-2128	Chain, Snubber Spring
O	3	2101-0217	Quick Link
P	1	2101-0216	Quick Link
Q	1	DOTH-2421	Cold Shut
R	3	DOTH-2214	Washer
S	1	DOTH-2547	Spring, Lip Maintenance
T	1	DOTP-2006	Prop, Lip Maintenance
U	3	DOTH-2062	Bolt, Shoulder
V	1	DOTH-2351	Bolt,Clevis
W	1	DOTH-2163	Nut, Locking 1/2"
X	1	DOTH-2210	Washer
Y	1	DOTH-2374	Cotter Pin

Lip Activation JAN 2012 and Newer



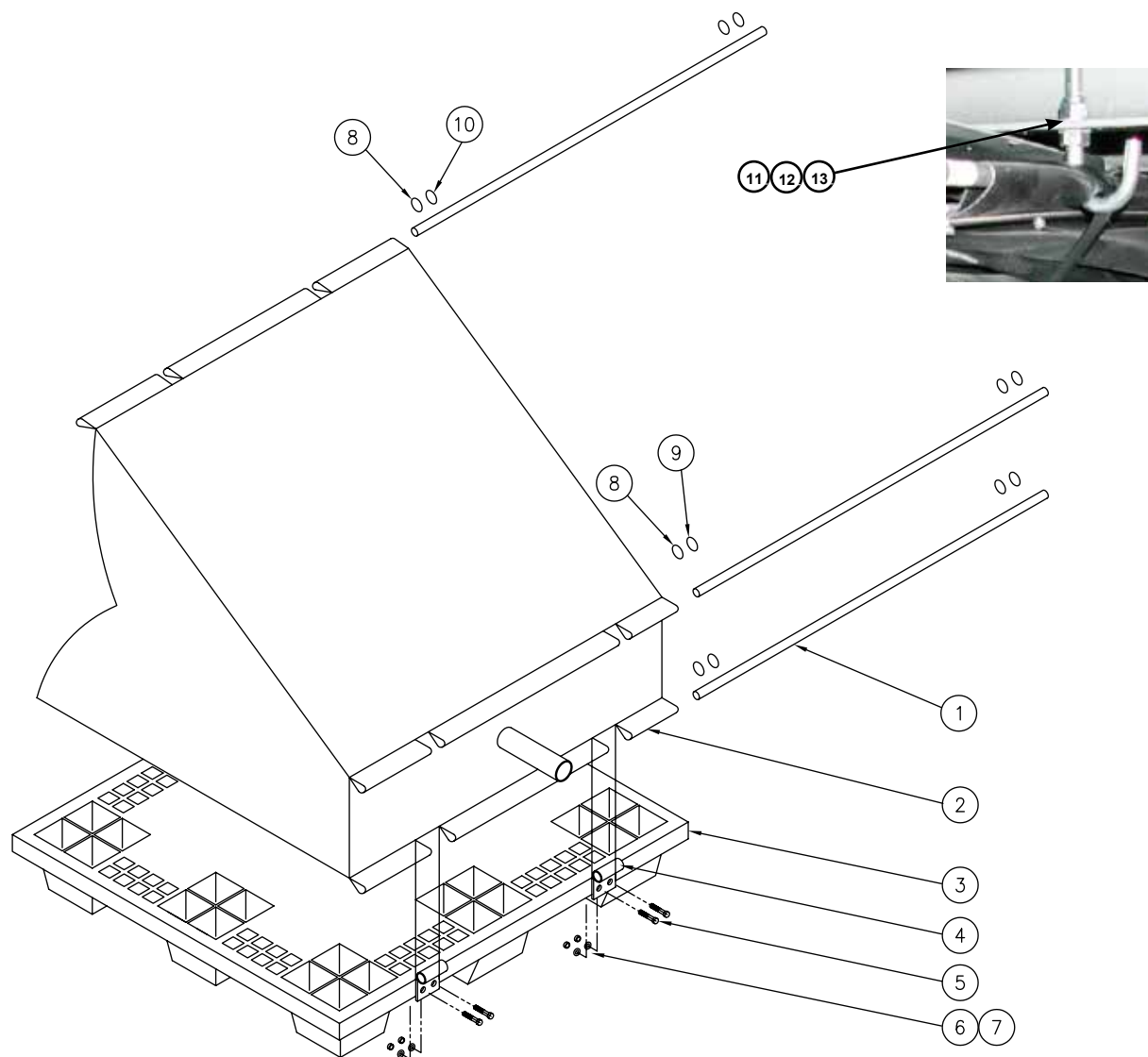
Item	Quantity	Part Number	Description
A	1	DLIP-0305	Lip Assist Rod Complete 34" Lg (Includes Nuts)
B	1	2101-0221	Washer 1-3/4
C	1	9511-0156	Spring, Lip STD
		9514-0114	Spring, Lip HD
D	1	2101-0222	Bolt, Shoulder x 1/2 x 1 3/4
E	1	2101-0223	Nut, Nylon lock
F	1	9513-0091	Prop, Lip Maintenance Kit (includes all hardware)
G	1	5775-0004	Lip Latch Assembly (Includes Spring and Cable) 16" long
		5775-0005	Lip Latch Assembly (Includes Spring and Cable) 21" Long
H	1	2101-0229	Bolt, 1/2 x 1 Lg. (DOTH-2351)
I	6	DOTH-2210	Washer, 1/2
J	1	2101-0045	Cotter Pin 1/8 x 1.00 LG (DOTH-2351)
K	2	DOTH-2163	Nut, 1/2 x 13 Lock
L	1	2101-0334	Shackle, 3/8 - 2000#
M	1	2102-0002	Chain 1/4 Grade 40/43 35 links 42" long
N	1	DPLA-0341	Linkage Bar
O	1	DOTH-2061	Bolt Shoulder 1/2 x 1-1/2 Long 3/6-16 UNC
P	1	DOTH-2137	Nut, 3/8-16 UNC Lock
Q	1	2101-0308	Screw, Shoulder, 1/2 x 1.75 - 3/8-16 UNC BLK Oxide
R	1	DOTH-2131	Nut, 3/8-16 Lock
S	1	DOTH-2065	Bolt, Hex 1/2-13 X 3-3/4 LG

PARTS



Item	Quantity	Part Number	Description
A	1	0941-0013	Spring, Lip Latch Extension
B	1	2101-0230	Ring, Split 1-3/4" OD
C	1	2101-0239	Link, Chain snap 1/4"

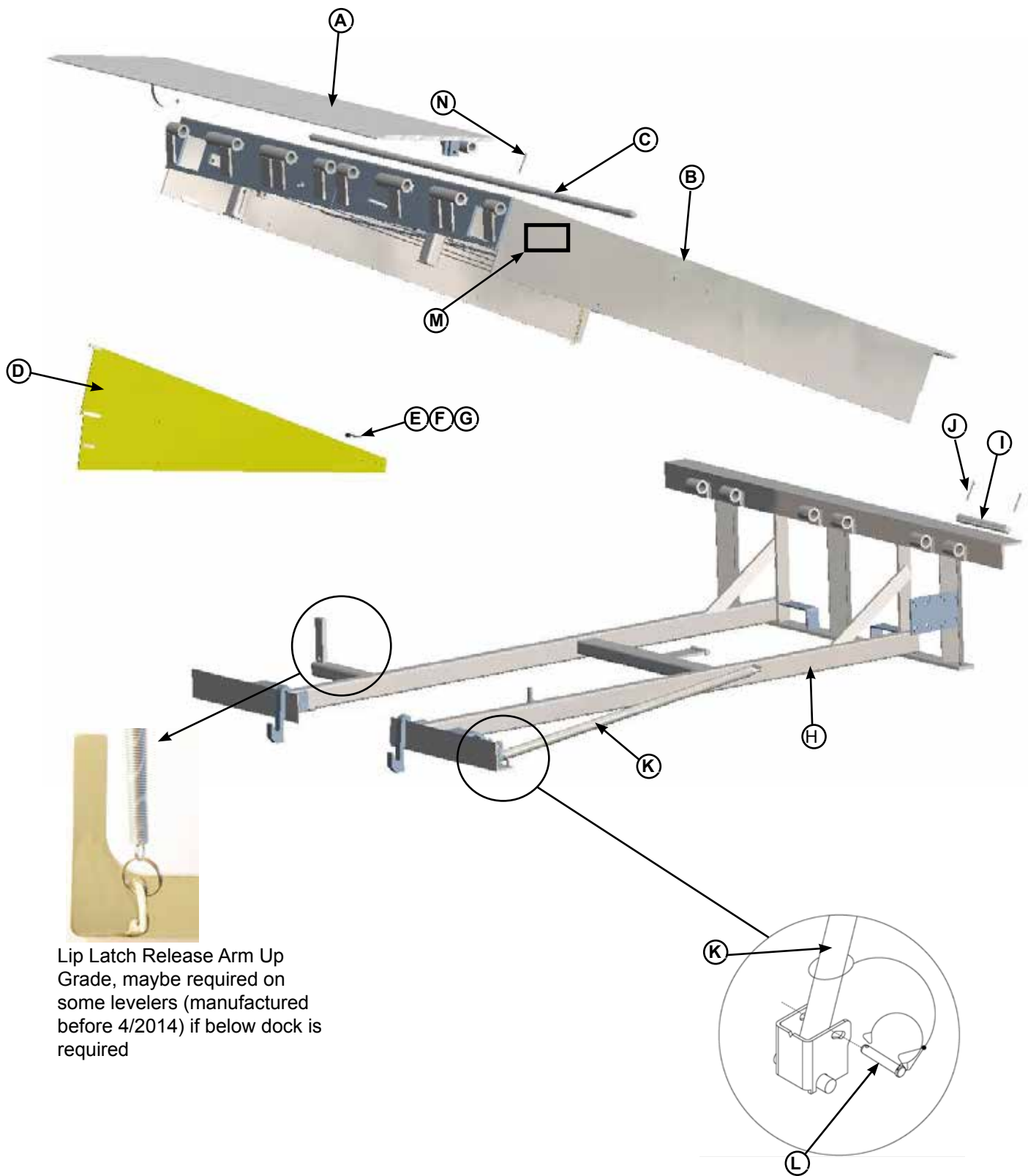
Airbag and Support Pallet



Item	Quantity	Part Number	Description
1	3	5812-0045	Hold Down Rod, 45" long x 7/16" diameter
2	1	5811-0009	Air Bag Bladder
3	1	5811-0012	Skid, Air Bag Leveler
4	2	5813-0001	Skid BRKT, Air Bag Leveler,
5	4	2101-0098	Screw, HHCS, 5/16-18UNC x 1-1/2 long
6	4	2101-0214	Nut, Flange, Top L/N, 5/16 - 18UNC
7	4	2101-0058	Washer, Lock 5/16
8	6	2101-0224	Rod Clamps
9	4	2101-0079	Washer Flat 1/2 inch
10	2	2101-0230	Ring, Split 1.75 O.D
3-10	1	5814-0029	Skid, Air Bag Leveler Assembly, Includes Items 3-10
11	2	2101-0231	Bolt,Hook, J -3/8 -16, 1" Eye x 4"
12	4	2101-0207	Nut, Hex,3/8-16 UNC Zinc Plated
13	4	2101-0060	Washer, Flat, 3/8 " SAE Zinc Plated

PARTS

Frame and Platform



Frame and Platform

Item	Quantity	Part Number	Description
A	1	See Table A	Lip, Welded Assembly
B	1	9515-____ ²	Platform, Welded Assembly
C	1	9202-0050	Pin, Lip Hinge 6'W
		9202-0051	Pin, Lip Hinge 6.5W
		9202-0052	Pin, Lip Hinge 7W
D	1	DKIT-9179	Toe Guard Assembly 6 Foot (Both Sides and Hardware)
		DKIT-9180	Toe Guard Assembly 8 Foot (Both Sides and Hardware)
		DKIT-9181	Toe Guard Assembly 10 Foot (Both Sides and Hardware)
E	2	2101-0039	Nylon Lock Nut, 5/16-18 UNC
F	4	2101-0163	Washer, 5/16 in., Flat
G	2	2101-0011	Cap Screw, 5/16-18 UNC x 1 in.
H	1	8435-____ ¹	Frame,
I	3	9202-0002	Rear Hinge Pin
J	6	2101-0047	Cotter Pin, 1/4 x 2 in.
K	1	9224-0030	Maintenance Prop "39.50
		9224-0031	Maintenance Prop "43.50
		9224-0079	Maintenance Prop "39.50
L	1	9201-0009	Prop Pin & Clip
M	1	1751-0010	Decal, Model / Serial ID
N	2	2101-0046	Cotter Pin, 1/4 x 1-1/4 in.

¹ Provide dock leveler serial number, platform size, and lip size when calling or faxing orders.

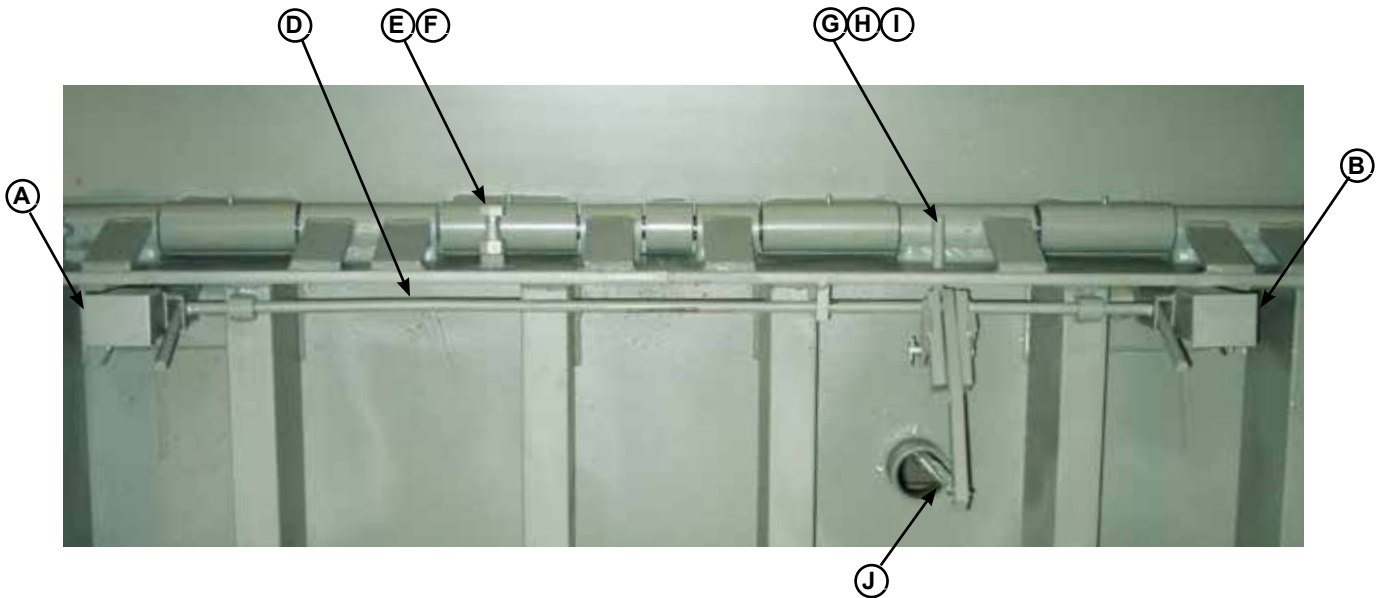
² Provide length and width of inspection plate opening when calling or faxing orders.

* For left/right orientation of dock leveler, see inside back cover of this manual.

LIPS (Item A) from Jan 2012						
	6.0 FOOT	25/30K	35K	40K	45K	50K
1	16	0595-1503	0595-1506	0595-1509	0595-0512	0595-1515
	18	0595-1504	0595-1507	0595-1510	0595-0513	0595-1516
	20	0595-1505	0595-1508	0595-1511	0595-1514	0595-1517
	6.5 FOOT					
1	16	0595-1521	0595-1524	0595-1527	0595-1530	0595-1533
	18	0595-1522	0595-1525	0595-1528	0595-1531	0595-1534
	20	0595-1523	0595-1526	0595-1529	0595-1532	0595-1535
	7.0 FOOT					
1	16	0595-1539	0595-1542	0595-1545	0595-1548	0595-1551
	18	0595-1540	0595-1543	0595-1546	0595-1549	0595-1552
	20	0595-1541	0595-1544	0595-1547	0595-1550	0595-1553

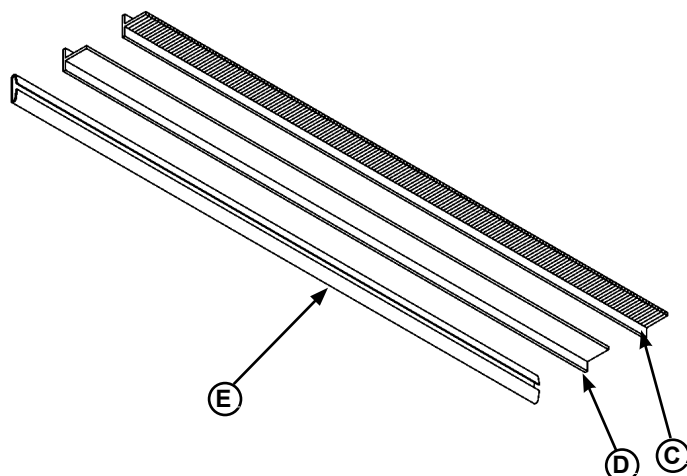
PARTS

Below Dock Control



Item	Quantity	Part Number		Description
A	1	9514-0108		Leg, Right Safety Assembly with Spring.
B	1	9514-0109		Leg, Left Safety Assembly with Spring
D	1	DPLA-2122		Pull Bar Assembly, Safety Leg
E	1	DOTH-2075		Cap Screw, Lip Stop 5/8-11 x 2.5 LG UNC GR5 (2101-0243)
F	1	DOTH-2356		Nut,Hex 5/8-11 UNC (2101-0042)
G	1	DOTP-6646		Rod, Push Assembly
H	1	DOTH-2356		Pin, Clevis
I	1	DOTH-2374		Cotter Pin
J	1	7953-0131		Safety Chain kit
K	1	4261-0004	*	Ring, Chain
L	1	7951-0019	*	Chain, Safety leg
M	1	2101-0216	*	Quick Link
N	1	2101-0239	*	Chain Snap link

* Part of Assembly 7953-0131

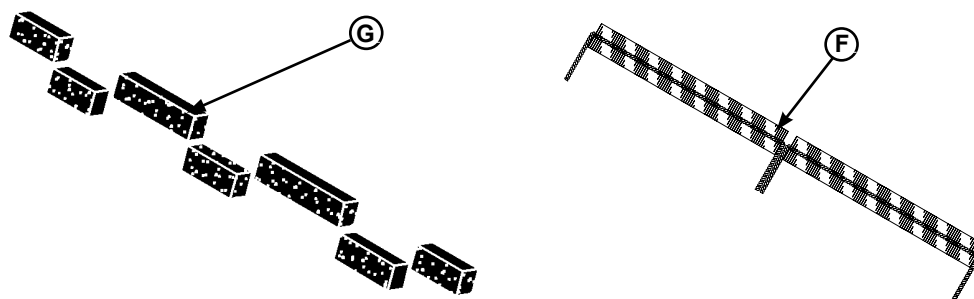


Weather Seal Kits

Item	Quantity	Part Number	Description
A*	1	0195-0021	Brush Kit Includes Seal and Track, 1-1/2 in. 82" Lg. (Both Sides)
B*	1	0195-0033	Rubber Kit Includes Seal and Track, 1-1/2 in. 82" Lg. (Both Sides)

Individual Replacement Seals

Item	Quantity	Part Number	Description
C*	1	0192-0098	Brush Refill, 1-1/2 in. 82" Lg.
D*	1	0192-0085	Rubber Refill, 1-1/2 in. 82" Lg.
E*	1	0192-0146	Replacement Channel



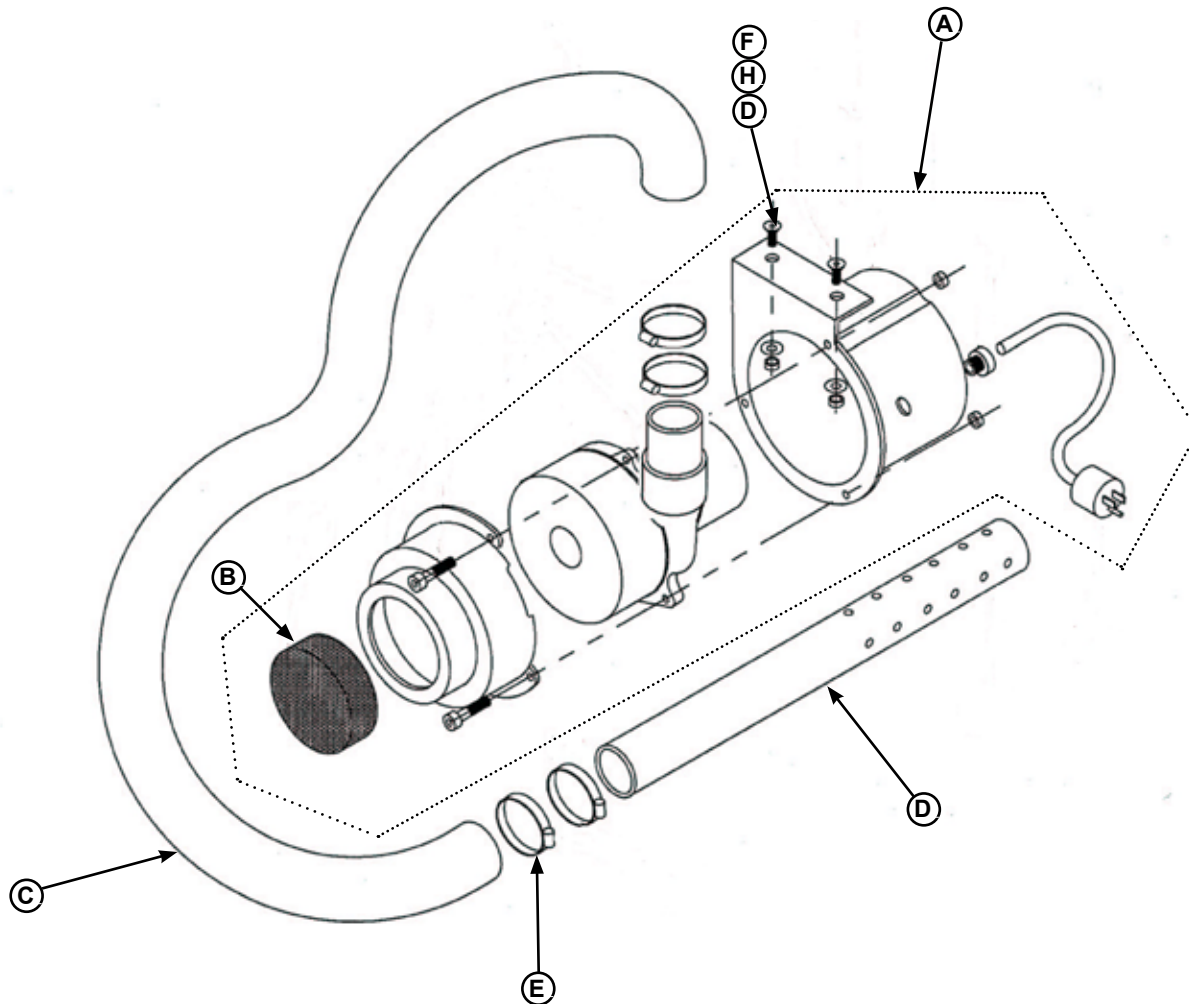
Item	Quantity	Part Number	Description
F*	3	0195-0044	Rear Powerseal Kit(Brush Seal)
G*	1	0195-0046	Foam Seal Kit 6'
		0195-0047	Foam Seal Kit 6-1/2'
		0195-0048	Foam Seal Kit 7'
		0192-0179	Foam Seal 108" Long

* Provide dock leveler serial number and size of platform when calling or faxing orders.

*Provide width of weatherstrip when replacing existing seals

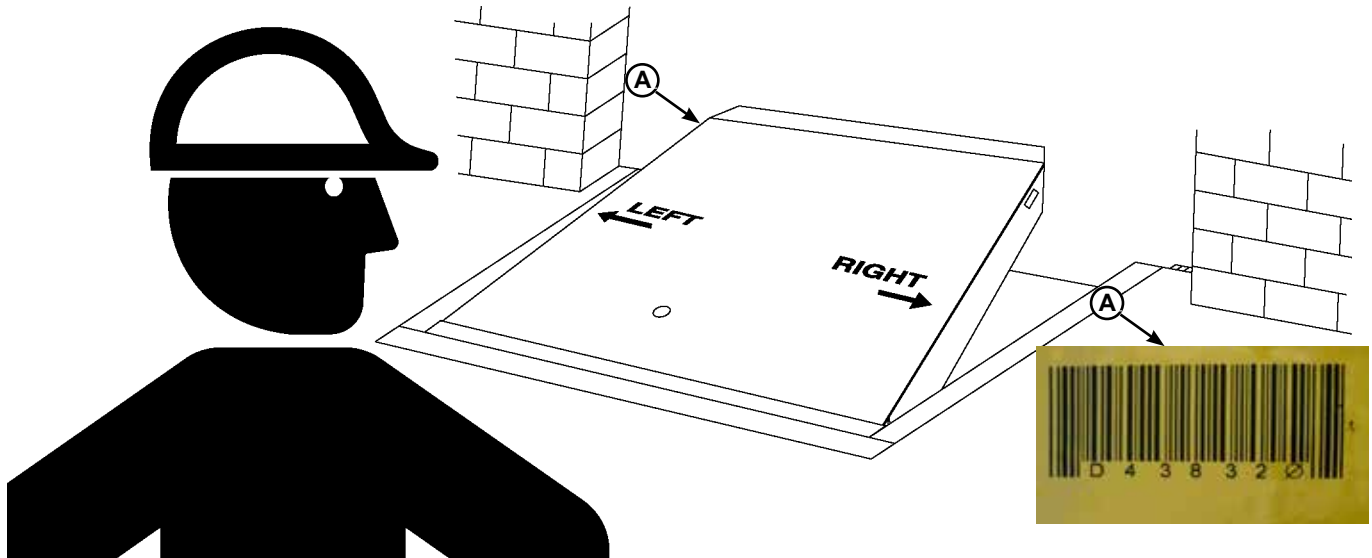
PARTS

Motor and Blower Assembly



Item	Quantity	Part Number	Description
A	1	9395-0359	PPAC,Blower Assy
B	1	9391-0021	Filter Element (Included With 9395-0359)
C	1	9391-0022	Tube, 2" (50.8mm) OD, 36" (914.4mm) Length 6' and 8' Levelers
		9391-0041	Tube, 2" (50.8mm) OD, 46" (914.4mm) Length 10' levelers
D	1	9392-0047	Pipe, PVC, 1-1/2" SCH40 X 24" (38.1 X 609.6mm)
		9392-0068	Pipe, PVC, 1-1/2" SCH40 X 24" (38.1 X 609.6mm) With 90Deg Elbow
E	4	9391-0023	Clamp, Tube
F	2	2101-0143	Nut, Hex, Nylon Locking, 1/4-2
G	2	2101-0007	Screw, Cap, Hex, 1/4-2 X 1 LG
H	4	2101-0005	Washer, Flat 1/4"

Customer Information



NOTE: Refer to illustration for left/right orientation of dock leveler.

The model/serial number decal (A) is located on the left side of the platform near the front (lip) of dock leveler.

Air Bag serial number on left hand corner next to blower motor.



When you receive your AP-Series dock leveler, write down the dock leveler model and serial number in the form provided. This will help ensure safe keeping of the numbers in the event the model/serial number decal (A) becomes lost or damaged.

Also, write down Systems, Inc.'s job number, the company that installed the dock leveler, and the original owner's name. This will all help to identify the specific dock leveler if more information is required.

When ordering, use part numbers and description to help identify the item ordered. Do not use "item" numbers. These are only for locating the position of the parts. Always give dock leveler MODEL NUMBER and/or SERIAL NUMBER.

For service, call or contact:

Systems, Inc.
P.O. Box 309
Germantown, WI 53022

Phone: (800) 643-5424
Fax: (262) 255-5917
E-mail: techservices@docksystemsinc.com

Dock Leveler Information

Model _____

Serial No. _____

Systems, Inc., Job No. _____

Original Owner Information

Name _____

Address _____

Installer Information

Name _____

Address _____

Date of Installation _____

STANDARD PRODUCT WARRANTY

SYSTEMS, INC. warrants that its products will be free from defects in design, materials and workmanship for a period of one (1) year from the date of shipment. All claims for breach of this warranty must be made within 30 days after the defect is or can with reasonable care, be detected. In no event shall any claim be made more than 30 days after this warranty has expired. In order to be entitled to the benefits of this warranty, the product must have been properly installed, maintained and operated in accordance with all manufacturer's recommendations and/or specified design parameters and not otherwise have been subject to abuse, misuse, misapplication, acts of nature, overloading, unauthorized repair or modification, application in a corrosive environment or lack of maintenance. Periodic lubrication, adjustment and inspection in accordance with all manufacturers' recommendations are the sole responsibility of the Owner/User.

In the event of a defect, as determined by SYSTEMS INC., covered by this warranty, SYSTEMS INC. shall remedy such defect by repairing or replacing any defective equipment or parts, bearing the cost for the parts, labor and transportation. This shall be exclusive remedy for all claims whether based on contract, negligence or strict liability.

WARRANTY LIMITATIONS

THE ABOVE WARRANTIES ARE IN LIEU OF ANY OTHER WARRANTIES, WHETHER EXPRESSED OR IMPLIED, INCLUDING BUT NOT LIMITED TO ANY IMPLIED WARRANTY OF MERCHANTABILITY OR FITNESS FOR A PARTICULAR PURPOSE. SYSTEMS INC. AND ITS SUBSIDIARIES SHALL NOT IN ANY EVENT BE LIABLE TO ANYONE, INCLUDING THIRD PARTIES, FOR INCIDENTAL, CONSEQUENTIAL OR SPECIAL DAMAGES OF ANY KIND INCLUDING BUT NOT LIMITED TO, BREACH OF WARRANTY, LOSS OF USE, LOSS OF PROFIT, INTERRUPTION OF BUSINESS OR LOSS OF GOODWILL.

PRODUCT SPECIFIC WARRANTY "AP" SERIES LEVELER

In addition to the "Standard Product Warranty" provided with all Poweramp® Products, Systems Inc., guarantees materials, components and workmanship to be free of defects for the following extended periods:

Structural Warranty – For a period of nine (9) years the product will carry a prorated structural warranty. This warranty specifically applies to; the deck section, lip section, frame, rear hinge assembly and front hinge assembly only. This warranty covers structural repairs to or replacement of dock leveler in Systems Inc sole discretion and expense including reasonable labor, materials, freight and travel. If Systems Inc determines replacement is necessary, it will provide the original purchaser with a credit toward the purchase of the new replacement Systems Inc. product in the amount equal to the original purchase price of the warranted product F.O.B. point of manufacture, discounted on a ten year straight line basis by the number of years of use prior to replacement.

Pneumatic Warranty – For a period of four (4) years from the expiration of the Standard Product Warranty, Systems will provide replacement component parts from defective lifting system. This warranty specifically covers material and freight only and applies to; the air bladder, seals, hoses and motor assembly.