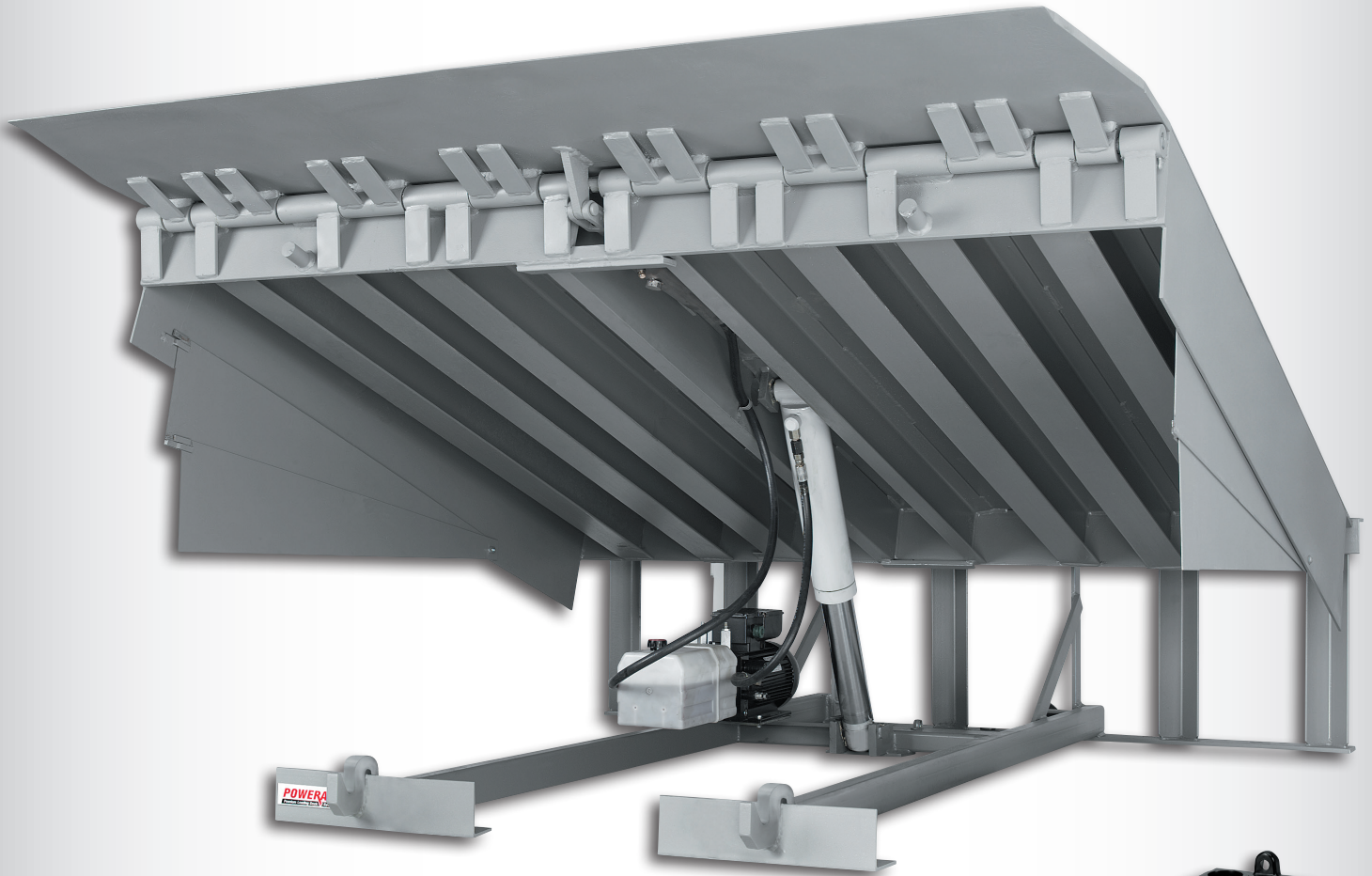


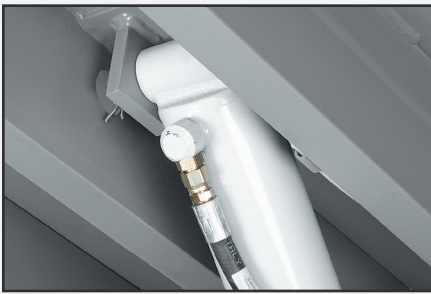
HYDRAULIC DOCK LEVELER



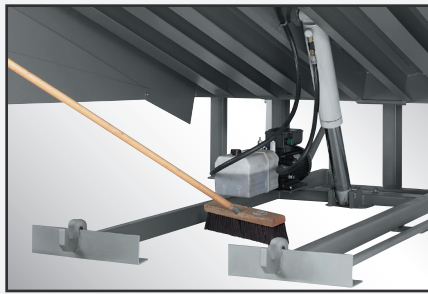
** EH Series 7'x8' 50,000 CIR with Clean Sweep Frame shown*



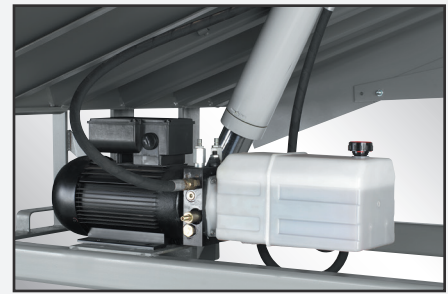
- ▶ Push Button Control Box
- ▶ Four Sided Box Construction
- ▶ Inverted Piston Style Hoist Cylinder
- ▶ Fully Hydraulic Lip Activation
- ▶ Non-Adjustable Velocity Safety Stop
- ▶ Lockout/Tagout Maintenance Strut
- ▶ Night Locks/Cross Traffic Support
- ▶ 1.25 HP Single Phase Motor
- ▶ Translucent Reservoir
- ▶ Low Maintenance Design
- ▶ Full Range Toe Guards
- ▶ Lockout/Tagout Maintenance Strut
- ▶ B410-14 Laminated Dock Bumpers
- ▶ Made in the USA



Inverted Piston Style Hoist Cylinder.



CleanSweep Frame Design.



Translucent Hydraulic Reservoir.

OPERATION

The Poweramp EH Series Leveler utilizes a hydraulic operation with push-button activation. The dock attendant simply depresses and holds the raise button on the dock controls, which raises the leveler and extends the lip automatically. Releasing the raise button will permit the leveler to float down to the bed of the truck. The standard lip is 16" and operating range is 12" above and 12" below dock level. The platform is designed to compensate for canted truck beds up to 4" and remain flush with the dock floor.

HYDRAULICS & ELECTRICAL

An inverted barrel "piston style" hydraulic cylinder keeps hoses neatly protect under the leveler deck. Platform free-fall protection is accomplished with an externally mounted, non-adjustable velocity fuse. The lip is extended using a fixed but fully yieldable lip cylinder.

The 1.25 HP (TENV) motor provides a smooth and quiet operation. All control components, connections and wiring are UL listed or recognized. Control panels are manufactured in Poweramp's UL-approved control panel shop.

SAFETY FEATURES

- Externally mounted, non-adjustable velocity fuse is used to prevent free fall of the platform.
- Full range telescoping toe guards close off sides even in highest position and through entire operation.
- Built in lockout/tagout maintenance inspection strut.
- Lip keepers for cross traffic support and automatic night lock security against theft.

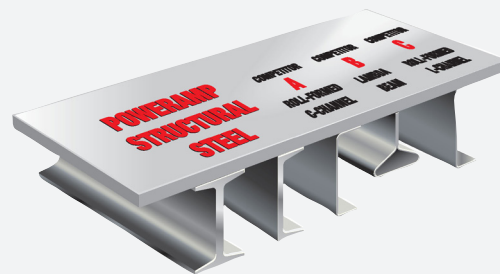
VEHICLE RESTRAINTS AND ACCESSORIES

For a safer loading dock, all Poweramp levelers can be equipped with a light communication system and vehicle restraints, which help prevent unexpected trailer departure from the loading dock. A Bar-Lift Safety Barrier is also available to prevent forklift trucks from driving over the dock edge.



CONSTRUCTION

The EH Series combines structural steel characteristics with an economically efficient hydraulic system. It has a maximum Comparative Industry Rating (CIR) of 60,000 lbs. All Poweramp Levelers are built with a durable four-sided box construction. The use of structural steel C channels or I beams create substantially more deck support than other levelers.



EH Series Common Options

- ▶ Vehicle Restraint
- ▶ Integrated Control Panel
- ▶ Custom Interlocking
- ▶ Extended Lip Sizes (18" and 20")
- ▶ Weather Seal (Brush or Rubber)
- ▶ 3-Wheel Offset Forklift Protection
- ▶ Vertical Dock Bumpers
- ▶ Quick Cycle Lip Extend
- ▶ Dock Lights

Model - Nominal Size

- | | | | |
|---------|-----------|----------|------------|
| ▶ EH66 | 6' x 6' | ▶ EH6510 | 6'6" x 10' |
| ▶ EH68 | 6' x 8' | ▶ EH76 | 7' x 6' |
| ▶ EH610 | 6' x 10' | ▶ EH78 | 7' x 8' |
| ▶ EH656 | 6'6" x 6' | ▶ EH710 | 7' x 10' |
| ▶ EH658 | 6'6" x 8' | | |

Capacity Range 25,000 - 60,000 lbs.



W194 N11481 McCormick Drive • Germantown, WI 53022
Phone: 1.800.643.5424 • Email: sales@poweramp.com

www.poweramp.com

DISTRIBUTED BY: